



ST JOHN'S & ST MARTIN'S

PARISH CHURCHES

Church Magazine

February 2026





LYNE & CO

Building & Renovation Company

Quality building and carpentry work

Bespoke joinery

Painting and Decorating

Capel: 01293 871008

Email: info@lyneandco.co.uk

View examples of our building and joinery work at:

www.lyneandco.co.uk



MJP Plumbing & Heating Ltd

Will do any job from a tap washer to refitting your bathroom.

Boiler repairs and servicing.

Gas safe registered.

Contact Mike on 07768 844276
or mike@mjpplumbing.com

RE-SIZE
RE-STYLE
RE-DESIGN

DESIGN & ALTERATIONS

TAILORING AND ALTERATIONS

Womenswear and Menswear Alterations,
Shortening, Lengthening, Let out, Take in,
Zip replacement (coats, trousers, dresses, etc.)
Prom / Wedding / Bridesmaid Dress Alterations
Men's Suit and Trousers / Sleeves Alterations

CURTAINS, BLINDS, HOME DECOR

Made to measure Curtains
Roman Blinds
Curtains Alterations
Cushions cover

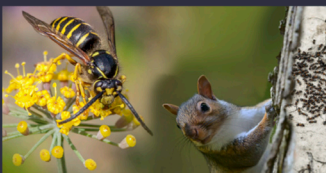
07960143283
 szabina.farago@gmail.com

COLLECT AND DELIVER
Whitley Manor Cottage, Bramley, GU5 0LL

SOLVING PEST PROBLEMS OTHERS CAN'T - Since 2008

From Gomshall

ALL PESTS: Rats, mice, squirrels, wasps, woodworm, rabbits, deer fencing, loft insulation clearance



PETER HIGGS

Surrey's highest rated pest control service on



- Ants 2 visits £172 +VAT
- Moles min 2 visits £60 +VAT per visit
- Rodents 3 visits £125 +VAT per visit
- Wasps £99 + Vat Guaranteed for the season

*quote "Wonersh" for these prices

For Homes & Businesses

www.pghbeegone.co.uk

sales@pghbeegone.co.uk

01483 273 478



PGH
PEST PREVENTION

Hivegrove, Kings Court, Burrows Ln, Gomshall, GU5 9QE

Visit our website



Proud members of
Checkatrade.com
Where reputation matters

Beegone
LIVE BEE REMOVAL

Inclusion of an advertisement in this magazine does not imply that the Church endorses, or takes responsibility for, any product or service provided.



February 2026

Vicar's letter . . .

Dear Friends,

By the time you read this, Christmas will be firmly back in the box and 'normal' life will have resumed. We will have enjoyed all sorts of rich and varied food over the festive season. It comes as something of a shame (although much less effort) to get back into a more regulated and consistent pattern. Variety is something that we all appreciate in our own way.

It was way back in about 420BC that Euripides said, "a change is always nice". This was rephrased by the poet William Cowper in 1785 when he penned the words, "Variety's the very spice of life".

I have had the opportunity recently of visiting San Diego. To stand by the coast and watch a hummingbird feed on the plants, while dolphins and sea lions swim past in the waves and pelicans brush the wave tops, has been a real treat. At the same time, the UK was under the grip of winter with snow, ice and sub-zero temperatures. What variety we have in our world!

It reminds me again of the very beginning of our Bible, when our loving creator God was forming the world and all that is in it. At the end of the day, He stood back and said, 'it is good'. And when God comes to the creation of humankind, God looks and sees that 'it is very good'. For us as the created, it is such a blessing to be so wanted, loved and appreciated. We have been given a world that is not monotone and 'flat', but is designed to be dramatic and interesting and exciting and varied. It is into this world that we are placed, to enjoy what is around us and to experience all the variety with which we have been blessed.

As our own gardens and neighbourhood come to life, as Spring begins to warm the soil and the air, we see life in all its variety and hope and joy bursting forth. As we look out on this new growth, let us ask God to help us experience the joy of creation and acknowledge the hand of God in all that we see around us. Let us know that this wonderful world is a love gift from God, because we are given the best by our creator. God looks on creation, including us, and says, 'you are very good' - literally, 'you are just what I wanted'.

We are part of the spice of life.

With love,

David

February Diary

for St John's Church, Wonersh and St Martin's Church, Blackheath

Sun 1		4th SUNDAY OF EPIPHANY
	10am	All-Age Service
	10am	Sung Holy Communion
Tues 3	9am	Morning Prayer
Wed 4	9am	Morning Prayer
Thurs 5	10.30am	Holy Communion (BCP)
Sun 8		2nd SUNDAY BEFORE LENT
	8am	Holy Communion (BCP)
	10am	Morning Worship
Tues 10	9am	Morning Prayer
Wed 11	9am	Morning Prayer
Thurs 12	10.30am	Morning Worship
Sun 15		SUNDAY NEXT BEFORE LENT
	10am	Holy Communion (CW)
	6pm	Choral Evensong
Tues 17	9am	Morning Prayer
Wed 18	9am	Morning Prayer
	7.30pm	Ash Wednesday Service [<i>see p.11</i>]
Thurs 19	10.30am	Holy Communion (CW)
Sun 22		1st SUNDAY OF LENT
	8am	Holy Communion (BCP)
	10am	Morning Worship
	6pm	'Be Still with God'
Tues 24	9am	Morning Prayer
Wed 25	9am	Morning Prayer
Thurs 26	10.30am	Discovery Service
.....		
CW = Common Worship (2000) BCP = Book of Common Prayer (Traditional 1662)		

March

Sun 1		2nd SUNDAY OF LENT
	10am	All-Age Service
	10am	Sung Holy Communion
Tues 3	9am	Morning Prayer
Wed 4	9am	Morning Prayer
Thurs 5	10.30am	Holy Communion (BCP)



Church Office

The Church Office (in The Vicarage) is open as follows:

Monday	9 am - 2 pm
Tuesday - Thursday	9 am - 1 pm
Friday	9 am - 2 pm

The office number is **01483 890266** (if outside office hours you may leave a message), or email office@wonershchurch.org.uk.

Copy Deadline for March 2026

Please submit articles for the March issue by **Tuesday 10th February**.

E-mail address for copy is magazine@wonershchurch.org.uk.

For advertising, please contact John Gosden (JohnGosden@aol.com or tel.502076).

A Warm Welcome for the New Year

As we step into the New Year, our children and family groups are back up and running, and we'd love to welcome new faces.

Kids' Church – Every Sunday

Our Kids' Church meets every Sunday and is a friendly, welcoming group of around 10-15 children aged 2–9. Together we enjoy games, creativity and favourite Bible stories as we explore who Jesus is and what faith can look like in our lives today. It's a relaxed, joyful space where children are known, valued and encouraged to ask questions and join in.

Mums, Bumps and Babies – Mondays (term time)

Our Monday group is open to all mums with babies from newborn to crawling. It's a safe, supportive space to pause, enjoy tea or coffee and homemade cake, and chat with other mums. There's plenty of opportunity to make friends, and gentle postnatal and sleep support is always available if needed.

Whether you're new to the area, new to church, or simply looking for connection, you'll find a warm welcome.

With warm wishes, Clare (clare@wonershchurch.org.uk)
Children and Families Leader



Pastoral Care

Our love and care for each other permeates all we do within our communities at Wonersh and Blackheath. It is a thread that underpins all our various connections and activities throughout our church as we aim to support each other on the journey of faith. We also have specific roles and occasional courses for more focused support, including: **Bereavement Support** [see p.8] - **Home Visits and Communion** - **Connect Groups** [see below] - **Pre- and Post-Marriage Courses** - **Parenting and Finding Faith Groups** - **Meals Ministry** for those in need [see p.8].

For more information, please contact Rev. Jan Durrant:
office@wonershchurch.org.uk.

Connect Groups

We want to encourage each other to grow in faith. Our small groups offer a place where we can learn and develop in an informal environment.

Groups of around 10-12 people meet on a regular basis (usually weekly) in local homes to study the Bible, pray, get to know each other and develop deeper friendships. Most groups meet in the evening, but there are some during the day.

If you are interested in joining a group or would like to find out more, then please contact **David Peters** (vicar@wonershchurch.org.uk / 07521 090179).





Kids Church
St John's WonerSh

**Bible Stories
Crafts & Activities
Games
Songs & Prayer
Friendship**

**Come & Join us at
The Vicarage,
St John's Church, WonerSh
Sundays, 10-11.15am**

MUMS, BUMPS, & BABIES

Coffee, cake, and connection

A gentle, friendly space for mums of little ones from bump through to crawling.

A moment to breathe, to be heard, and to be cared for by a team who understand the highs and lows of early motherhood. Baby cuddles always on hand if you need a break!

**TERM TIME
MONDAYS
10AM-NOON**

The Vicarage,
WonerSh Church
GU5 0PG

clare@wonershchurch.org.uk




Church Walking Group

A dozen of us enjoyed a lovely walk round Hurtmore in November, followed by lunch at the Squirrel Inn. We also had a much-appreciated coffee and cake stop at 'Elevenes' at St Nicholas' Church, Peper Harow, where we were made very welcome by Karen Munday and Wendy Edwards and learnt a lot about the history of the church.

The next walk will be on **Thursday 12th March** – further details from Catherine Keech (catherine@keechonline.com).



A great big **'Thank You'** to Marion and her team for providing over 40 parishioners with a Christmas Dinner - beautifully cooked, hot and delicious. Our meal together was full of laughter and chatter; followed by Rev'd David's quiz which was packed with knowledge and great fun.

Thank you all once more for making it a very special day!



Rosina Henham

Meet Rev. Jan Durrant

2025 was a very special year for me and my husband, Jamie.

In September I was ordained Deacon at Guildford Cathedral. This was the culmination of a growing conviction that this was God's calling for me, that started over six years ago and got stronger and stronger. Before ordination I had gone through a year of training and discernment that was tearful, wonderful, stressful and joyful! The teachers on the course were exceptional, and the worship was wonderful, but it wasn't until June that I knew I had been finally approved for ordination.



The service itself was joyful and uplifting. I couldn't stop smiling all day. I knew a deep contentment that this was doing the right thing and that this was God's will for my life. It felt as if I had champagne bubbles bursting inside me, and that feeling has stayed with me.

Then in July last year we moved house to Blackheath. Again, I had long felt a sense of a call to Blackheath and my wonderful husband agreed to support me in this. So we sold our previous house and, after a couple of false starts, we found exactly the right home in Blackheath. I love all things to do with nature, so having the Common just outside our back door is wonderful. We have our own path that leads directly onto the Common. I love the walks there, it's so beautiful. My favourite area is around the War Memorial - it's just so peaceful. Where we previously lived, going for a walk after rain required wading through thick clay mud, but Blackheath, being sandy, drains so quickly. It's amazing.

We are loving getting to know the community of Blackheath and look forward to getting more and more involved. Jamie is on the Village Hall committee, and volunteers for the work parties that help look after the Common itself. I try to go to as many local events as I can, and I particularly enjoy meeting people at the regular coffee mornings. I am going to ask for a day off work to take part in the annual reptile survey (I keep pet snakes at home).

I love being part of the life of St Martin's Church and taking part in the services. I'm looking forward to doing more of these. I enjoy being inside the church and feel such peace there.

As well as St Martin's, another focus for my ministry is our Seniors' Ministry. This is particularly centred on the 10.30am service which takes place each Thursday at St John's, Womersley, and brings together people from the whole parish. It's a great gathering with a real sense of mutual care and community. On four days a week you'll also find me in the parish office where I work as the Parish Administrator.



2026 will need to be really special to match all the highlights and excitement of last year, but the champagne bubbles continue to rise!



When you need property advice — we're here.

Not every conversation about property starts with selling.

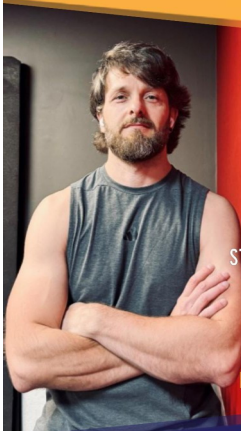
Sometimes it's about understanding value, timing, or what's possible.

At Chantries & Pewleys, we're known for clear, honest advice — whether you're planning a move, exploring options for the future, or simply want a better understanding of your home.

No pressure. No obligation. Just experienced local guidance, when you need it.

01483 304 344

shalford@chantriesandpewleys.com



SPECIAL OFFER:
10% OFF WHEN YOU PRE-PAY
FOR 10 SESSIONS

LOCATIONS
GODALMING, WOKING
OR YOUR HOME

**START YOUR FITNESS JOURNEY
BOOK NOW!**

CONTACTS:
07500871129
P.CAF.FITNESS@GMAIL.COM

SERVICES

1-TO-1
COUPLES
GROUPS (1 TO 4)

FOCUS

STRENGTH TRAINING
STRENGTH IN CYCLING
WEIGHT LOSS

MASON VOLLER LIMITED

NICEIC registered

*Electrical Contractors - Domestic and
Commercial - Installation & Repairs.*

Builders Yard, Barton Road, Bramley, GU5 0EB

info@masonvoller.co.uk 01483 572763

RICHARD LEE

Painter & Decorator

Experienced in all aspects of wall coverings,
special effects, interior and exterior decorating.

Over 30 years experience.

Tel: 01483 612055 / 07789685560 / 07717154392

R.A. ROBERTSON & SONS

High Street, Bramley.

Tel: Guildford 892207

sales@robbo.co.uk

TV - Domestic appliances - Sales & Service


WONERSH MEMORIAL HALL

Your village hall - for parties, classes, clubs
and now skittles evenings!

Online booking: wonershmemorialhall.com

Call Hilary Solt 07931 516910

or Louise Healy 01483 898539



CHATTERBOX

PARENT & TODDLER GROUP


Thursdays 9:30-11am

A relaxed, friendly morning with:

- Play, toys & activities for toddlers & preschoolers
- Stories & songs
- Fresh tea & coffee, cake & conversation for grown-ups

**Lawnsmead Hall,
Wonersh, GU5 0PQ**

wonershchurch.org.uk




Wonersh Community Garden

We are growing vegetables, flowers, and friendship and we'd love you to be part of it.

Join us Saturday mornings
10 am – Noon
St John's Wonersh, GU5 0PG

Everyone's welcome, no experience needed.



If you're carrying something heavy,
you don't have to carry it alone.

PASTORAL & BEREAVEMENT SUPPORT

Life can sometimes present us with difficulties that feel overwhelming:

- The loss of someone close
- Family tensions or breakdown
- A difficult diagnosis
- Feeling isolated, exhausted, or numb

Our Pastoral and Bereavement Support Team is here to listen. We offer a free, safe, confidential space to talk with someone trained in pastoral care or bereavement support.

Get in Touch:
<https://www.wonershchurch.org.uk/>
office@wonershchurch.org.uk




Meals ministry

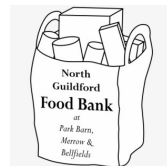
For when you need a little help

Are you recently bereaved?
Facing serious illness?
Or have you just welcomed a new baby?

We'd love to support you with some free home-cooked meals delivered to your door – a small way to show care and compassion during a challenging time.

Please don't hesitate to get in touch
✉ clare@wonershchurch.org.uk
☎ 01483 890266

North Guildford Food Bank



In the run up to Christmas, the Foodbank ran extra sessions to keep up with the demand. Yet again, we served a record number of clients: 387 in December and 2,462 overall in 2025. This is an extraordinary achievement and is made possible by the generosity of our donors. Thank you so much for your part in making that possible.

We are now in the process of restocking our much-depleted stores. Our requests for February are:

Tinned Fish
Tinned Fruit
Teabags

Biscuits
Shower Gel
Laundry Detergent

In addition, we always need strong carrier bags / bags for life.

Donated items can be left in the foyer of St John's church, or in the crate on Rosie Couzens' doorstep (**10 Little Orchard Way, Shalford, GU4 8JY**).

If you would rather make a financial donation, please refer to our website: northguildfordfoodbank.co.uk, which lists the ways you can donate (if you are a taxpayer, Gift Aid can be claimed by the Food Bank on personal donations).



A great big '**Thank You**' to Charlotte and her team of carollers bringing joy as they sang carols and wound their way around the village at the beginning of the Christmas festivities, recalling memories of past years.

Thank you once more!

Rosina Henham



Guildford Health Walks

Guildford Health Walks need at least five enthusiastic volunteers to join their friendly team to back-mark and/or lead their free community group health walks. If you have a passion for walking and would be keen to share that with others to help them improve their health and wellbeing, then this role may be perfect for you!

This is a rewarding opportunity to meet like-minded people, make a real difference to the community and gain new leadership experience. Full simple training will be provided, and you will receive ongoing support from the coordinators and your fellow team members. So resolve to make a difference in 2026 by sharing your enthusiasm for walking - become a volunteer for Guildford Health Walks!

For more information, email volunteers@guildfordhealthwalks.org.uk or call Andy on **07982 908036**.

For more details about Guildford Health Walks, visit guildfordhealthwalks.org.uk.

Blackheath Focus

February 2026



JOIN THE BLACKHEATH CHURCH CHOIR - MAKE A JOYFUL SOUND!



Are you looking for a way to deepen your spiritual practice
and connect with your community?

Our **St Martin's Church Choir** invites you to share your voice and join our friendly choir. We are looking for singers of all voice parts to add their unique sound to our services. No prior experience or audition is necessary, just a heart for music and a desire to serve. Why not come and try it out?

You will find: joyful worship; a friendly musical fellowship; an exploration of faith through music; and an opportunity to share and learn sacred music.

Do join us!

Rehearsals:

FIRST SUNDAY IN THE MONTH, 9.15am for the 10am Sung Holy Communion.

THIRD SUNDAY IN THE MONTH, 5.15pm for the 6pm Choral Evensong.



Contact: Patricia via the Church Office –

office@wonershchurch.org.uk or call **01483 890266**

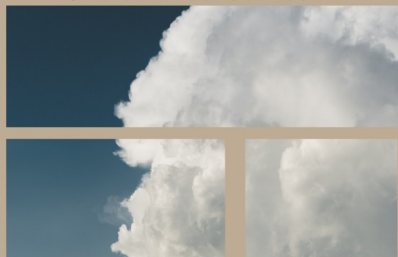


BE PART OF THIS UPLIFTING MINISTRY - We would love to hear from you

St Martin's Church Choir - RSCM Affiliated



St Martin's Blackheath



Pray with us

**Wednesdays
9 am**



*Coffee morning,
Monday 2nd March
10.30am-12.00pm
Blackheath Village Hall*





Ash Wednesday Service **18th February, 7.30pm** **St Martin's Church, Blackheath**

Ash Wednesday is the first day of Lent and the service will follow a traditional pattern, allowing reflection on the season, marked with the imposition of ashes on the forehead.

Blackheath Care Team

The Blackheath Care Team has a pool of volunteers for residents in Blackheath who need a lift to hospital appointments, or dentist or surgery appointments; the volunteers can also collect prescriptions, etc.

If you need assistance,
please contact Penny Kirkwood on **07973 836987** (phone or text),
or otherwise Alex Jones on **07810 486521**.

We are happy to help!

The Villagers (Volunteer) Public House



After reconsideration, Waverley Borough Council decided that the Villagers (including the garden) should be relisted as an Asset of Community Value (ACV) for five years with effect from 5th November 2025.

Over the past decade the building has remained unused and has not operated as a public house. Since the pandemic, the needs and preferences of the local community have evolved. There is now a strong and clearly-expressed desire for the premises to return to active use as a licensed café, a wine or coffee bar with food, a mixed-use community hub or similar venue, rather than a traditional public house in the historic sense.

To clarify: the purpose of an ACV listing is to preserve the ability of the community to make use of a building or land for community benefit; it does not require that the building must remain in exactly the same use as when it was originally listed. In this case, the continued viability and community benefit of the building would be best served by allowing a modern, flexible hospitality and community use.

This flexibility will also ensure that the building becomes a much more viable and sustainable community asset. By allowing a broader range of uses that reflect contemporary community needs and commercial realities, the property stands a far greater chance of returning to active use and thriving long-term, rather than remaining vacant and deteriorating.

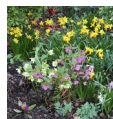
For more details of our vision, see www.blackheathsurrey.co.uk.

Village News

Wonersh & District Garden Club

We have an exciting programme planned for the coming year.

On **Wednesday 4th February**, our talk by B Brooks from the English Gardening School is **'The Mixed Border from Winter to Spring'**. It will be interesting to find out what can be planted to brighten up this colder time of year.



On **4th March**, our speaker is Julia Corden who has a passion for alpiners, herbaceous and unusual plants. Julia lectures widely in the UK, Europe, Canada, USA and New Zealand, and is past President of the Scottish Rock Garden Club. She will be focusing on easy alpiners for South East England.

Both meetings start from 7pm at the Wonersh Memorial Hall. Visitors are always welcome at £3 each.

If you would like any further information about the Club, please contact Hilary Goodridge: tel. **01483 535108** or email hilarygoodridge@ymail.com.

Wonersh Cricket Club



Whilst the winter continues, Wonersh Cricket Club is preparing for the new season, and a new league after winning promotion in the Surrey Downs League.

Those preparations include a new partnership with the T20 Cricket Community organization, which will see additional junior cricket at Wonersh this summer, alongside the existing joint scheme with Shamley Green. Winter nets will take place at Broadwater School throughout February and March - all-comers and beginners welcome!

Finally, the Club is looking for a new Treasurer. The volume of work is low, as we use an online accounting system; so, if you have the skills and a few hours to spare here and there, we would love to hear from you: secretary@wonershcc.co.uk.

Cre8tivity

**Do you find it difficult to prioritise time
for creative projects?**

Cre8tivity is a small group meeting once a month at the Vicarage to encourage participation in the creative arts. Bring along any project you are working on (or would like to start). We have lots of assembled experience in knitting, sewing and crochet and would love to see what you are making. We can even offer help if you get stuck.



The date for this month is **Tuesday 10th February**, 8 - 9.30pm - bring a friend!

Further details from community@wonershchurch.org.uk.

U3A Wonersh & District

Your local U3A, covering Blackheath, Bramley, Chilworth,
Shalford, Shamley Green and Wonersh



What's on in February 2026 – join us for these activities

Mon 2	Pilates: Lawnsmead Hall, Wonersh	Wed 18	Table Tennis: Bramley Village Hall
Tues 3	Tai Chi (2 groups): Lawnsmead Hall	Thurs 19	Latin: Godalming
	Big Band Music: Shalford Hall Club Room		Walk: meet Clifford Manor Road / Pilgrims Way, Shalford
Wed 4	Table Tennis: Bramley Village Hall		
Thurs 5	Mah Jong: Bramley Library Room	Fri 20	French: Godalming
	Latin: Godalming	Mon 23	Pilates: Lawnsmead Hall, Wonersh
Fri 6	French: Godalming	Tues 24	Tai Chi (2 groups): Lawnsmead Hall
	Quiz Afternoon: Shalford Village Hall	Wed 25	Table Tennis: Bramley Village Hall
Mon 9	Pilates: Lawnsmead Hall, Wonersh		Coffee Morning: Percy Arms, Chilworth
	Book Club: Selwyn Room, Parish Church	Thurs 26	Line Dancing: Shalford Upper Hall
Tues 10	Tai Chi (2 groups): Lawnsmead Hall		Pottery: Farley Green
Wed 11	Table Tennis: Bramley Village Hall		Latin: Godalming
Thurs 12	Line Dancing: Shalford Upper Hall	Fri 27	Art: Shalford Upper Hall
	Pottery: Farley Green	<div><i>Join us for some very interesting talks, visits and activities. Newcomers are welcome.</i> <i>For further details, please visit</i> https://wonersh.u3asite.uk <i>or phone Jacqui on 07814 379294.</i></div>	
	Latin: Godalming		
Mon 16	Pilates: Lawnsmead Hall, Wonersh		
	Play Reading: Selwyn Room, Parish Church		
Tues 17	(No Tai Chi)		

Tea@3 - at the Village Club!

Wonersh URC may have closed - but Tea@3 continues! Come along to the Village Club any Thursday from 3-4pm and join us to enjoy tea and cake and a natter.

Village Barn Dance – Delicious Supper included



The Stockbrokersbelt Band is coming back to Wonersh Memorial Hall on **Saturday 7th March, 7pm for 7.30pm start**. Come and join us for what promises to be another great evening. No previous experience needed - the band will tell you what to do!

Tickets **£20** each. Bring your own drinks.

Please email Graham on grahamjhealy@gmail.com or tel. **01483 898539** to book, or for more information.



Memory Lane

Memory Lane launched into their Christmas break with a joyful performance from the Wintershall Singers, finishing with performers sharing tea and cakes with the team and guests.



January was a time of reuniting, starting with a Bring & Share traditional New Year Party. This was followed on 19th January by a very helpful presentation from Dr Jill Rasmussen announcing the launching of new dementia treatments.

This month, Memory Lane meets again in the Cranleigh Arts Centre on **Monday 2nd February**; followed on **Monday 16th** by an interesting visit from Zoe Susijn who will kindly be setting up Motoview for guests to experience. The monthly *Walk In the Park* around Knowle Park will be as usual, starting at 10.30am on **Monday 9th February**.



Something different will be happening in March when guests will be given the opportunity to enjoy *Art For Fun*. More details of this new venture, and the planned Memory Lane Concert on Saturday 25th April, will be given in our next issue.

Memory Lane meets in the Cranleigh Arts Centre at 2.15pm on the 1st and 3rd Monday every month. For further details of Memory Lane and all our events, just call 01483 274398 or email: mamwild@aol.com.



PUBLIC TALK:

F. Scott Fitzgerald – Every photograph tells *The Great Gatsby*' story

Friday 20 March 2026 · 7.30-9pm

Assisi Room, St Augustine's Abbey, Chilworth

Step into the glamour of Jazz Age as photographs, narration and live music bring *The Great Gatsby* to life.

Presented by Lori Winch-Johnson & friends with songs of the Roaring Twenties performed by Anna Loveday and Dr Julie Ainscough

Only 30 spaces – advance booking essential

£10 early bird (book by 20 Feb), then £15

Refreshments served · Free parking

Book at: www.ticketsource.co.uk
(search 'Chilworth Abbey')

Assistant Manager needed for the Villages Wednesday Club

Would this suit you?



We are looking for a new volunteer who will take on the role of Assistant Manager to help run the **Villages Wednesday Club** at Blunden Court in Bramley. He or she would initially help with general volunteering, learning about the club and shadowing the current Assistant Manager until a suitable handover can take place. The Assistant Manager is generally at the club every other Wednesday, alternating with the Manager, and a small retainer is paid to reflect that responsibility.

The club provides a day out each week for elderly people living in the local community who are a bit lonely and isolated. They can have a chat over morning coffee, followed by a cooked lunch, afternoon tea and entertainment; and this gives their carers a day off too. The job of Assistant Manager is interesting and varied, and you will be helping to provide a fantastic service to improve the lives of local elderly people.

As the Assistant Manager, you would work with the Manager and a great team of volunteers to provide a warm, friendly and caring environment. The role involves assisting in organising the activities, whilst maintaining simple records such as registers, rotas and petty cash; as well as some admin, which can be done at home.

The role may suit someone who has nursing or care experience or has worked with elderly people; but this is not essential, as it's more important that we find someone who is friendly, caring, and practical. If you have some time on your hands and think you would enjoy being part of this team providing invaluable support for the community, do get in touch.

For further details, please contact Sue Searle: email manager@fourvillages.co.uk, or 07771 558541; see www.fourvillages.co.uk for more about the Wednesday Club.

Wonersh Village Foundation

The Foundation was created c.2004, at the time of our 'Save Our Village Shop' campaign. Initially it simply acted as the ultimate owner of Wonersh Village Stores Ltd, the company set up to buy and refurbish the shop and the attached gallery, funded by grants and interest-free loans from village members. More recently, the Foundation also acquired the flat above the shop.

However, now that the funding loans have been fully repaid, and we trust that the future of our shop has been secured, any surplus rents are potentially available to help fund needy causes in the local community. The Trustees are therefore happy to consider applications for grants, up to a maximum amount of £5,000 per grant.

In the first instance, please contact Graham Healy (grahamhealy@gmail.com or 01483 898539) for an Expression of Interest form. Please note that retrospective applications will not be considered, and allow at least 2 months for the grant process to go through.

Twinkle toes
Mobile
foot care clinic

MEMBER OF
BPA
BRITISH PODIATRIC ASSOCIATION

Kirsten Hall MCFHP MAFHP
07592 853178
twinkletoesfeet@outlook.com

• All in the comfort of your home •

IroningFairy
SAVE TIME - ENJOY LIFE

Laundry
Dry Cleaning
Ironing
Bulky Items

Fresh, Fast Laundry Delivered.
Free Collection & Delivery
Fast Turnaround

01483 428044 | www.ironingfairy.net

MULLARD
FUNERALS — GODALMING SINCE 1897

INDEPENDENT FUNERAL DIRECTORS
& MEMORIAL MASONS

- 24 Hour professional & personal service
- Pre paid & pre arranged funerals
- Private chapels of rest

01483 860279 • www.mullards.uk
121-123 High Street, Godalming
Surrey, GU7 1AG

FM

Seymours

TOP 6 TIPS TO SELL YOUR HOME
in Wonersh & Blackheath

- Strong first impressions**
A tidy front garden & driveway goes a long way.
- Neutral tones. Natural light**
Makes rooms appear more bright, spacious and inviting.
- Uncluttered rooms**
Makes it easier for buyers to imagine their own plans.
- Fresh Flowers**
Sets the tone for a well cared for home and adds energy.
- Subtle touches**
With a welcoming scent. It can create a positive emotional response.
- Summer fair footfall**
Take advantage of the increased footfall with a 'For Sale' board.

SPEAK TO US FOR TAILORED ADVICE ON SELLING YOUR HOME

01483 576833 | sales@seymours-guildford.co.uk | 217 High Street, Guildford, GU1 3BJ

MEN'S BREAKFAST

GATHER. EAT. CONNECT.



Saturday 7th February



08:30 - 10 am



Lawnsmead Hall, Womersley

Book your free space by emailing David at
vicar@womersleychurch.org.uk



Used Postage Stamps

I would be pleased to accept any stamps you may receive, any time during the year, in aid of local charity **Shooting Star Chase**. Please drop them into the G pigeonhole at St John's Church.

Many thanks to existing (and prospective!) supporters.



Camilla Gosden



The Hygiene Bank

The Hygiene Bank is a grassroots, people-powered charity and social movement, grounded in community. Our passion stems from the injustice that people may be unable to fully participate in society due to hygiene poverty. This is why we work to inspire social change.

At The Hygiene Bank, we believe it is not right that feeling clean should be a luxury or a privilege for anyone in our society; yet many are living in poverty and cannot afford to stay clean. That is why our network of projects exists – to give people access to the basics they need.

If you wish to donate any **unused and new toiletries or cleaning products**, you may leave them in the box at the back of St Martin's Church, Blackheath. For more details of the sort of products required, see thehygienebank.com.

Open Gardens

Local charity **Phyllis Tuckwell** is inviting garden-lovers across West Surrey and North-East Hampshire to take part in its Open Gardens event. By opening your garden for the public to look around and enjoy, and charging a small entry fee, you'll raise money to help fund the vital hospice care that Phyllis Tuckwell provides.

Visit www.pth.org.uk/open-gardens, email fundraising@pth.org.uk or call **01252 729446** to find out more.

Monday Lunch Club

Another year has passed, and the marvellous cooks have presented wonderful meals for around 20 people at Lawnsmead each Monday.

A great big **'Thank You'** from all of us!

Rosina Henham

Wonersh Speedwatch

Members of the Speedwatch team continue to be active in Wonersh. Speeding is a constant issue through our village; the Speedwatch initiative helps reduce speed by issuing letters to speeding drivers warning them of a potential police visit if they are caught again.

We desperately need more people to help support Speedwatch. The commitment is not onerous, and can be as little as one hour a month. Please support us by contacting the Parish Clerk (email clerk@wonershparish.gov.uk, or call **892601**) for a discussion.



WHAT IF YOU ARE
EXACTLY WHAT A
(CHILD NEEDS?)

FOSTERING
SERVICE



SURREY
COUNTY COUNCIL

surreycc.gov.uk/fostering

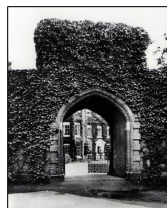


The Grade II Listed Gateway to Church Green

In 1935 Robert Haslam, the then owner of land previously owned by the Sudbury family and before them the Lords Grantley, put some of his Wonersh land up for auction in lots.

One large lot was bought by Kingston property developer Herbert Gaze and would later become the Wonersh Park estate development as we know it today. A second lot was purchased by the Douetil family, on which they built Wonersh House.

A third lot was purchased by Beatrice Cook of Barnett Hill ‘for the quiet use of the adult residents of the village of Wonersh’. This parcel of land, on which a substantial mansion had stood until demolished in 1929, included an 18-foot wall separating the land from Wonersh Street, and an imposing castellated gatehouse. The image opposite shows the gatehouse, with the front door of the mansion beyond, as it was pre-1929.



Beatrice Cook paid for the high wall to be reduced to its present height of 3 feet, thereby restoring the view of St John’s church from the highway. She also paid for the salvaged bricks to be reused in building the south wall of the green.

After WWII Beatrice Cook commissioned local sculptor John Hurren, whose workshop was at Grantley Cottages, to produce a memorial to the residents of Wonersh who had been active in the village during the war. The result was the two-part sculpture on the side walls of the gatehouse – see below. The artwork was completed and installed in 1953.



Not all the names of those featured in the sculptures are known to us. Those we know include Dr James Bell Nicoll (the village doctor), William Brett (shoemaker, sexton, verger and more besides), Mr Bacon (butcher), Mr Elwin (baker) and Mr Woods (fishmonger), among others.

Church Green remains a tranquil place near the village centre, and the gatehouse (with its resident population of protected bats) stands as a feature of interest and reminder of earlier times.

The gateway, perimeter walls and the green are looked after by The Wonersh Church Green Trust, established under a conveyance of 1 November 1950.

Wonersh History Society

Want to Make a Difference in your Village? Become a Parish Councillor!

Wonersh Parish Council is looking for a new Parish Councillor to help represent Wonersh village.

No special qualifications are required to be a councillor; indeed it is important that all sorts of people serve as councillors to give a good representation of the community. Training for new councillors is available, and we are supported by our Clerk and team of paid staff.

If you would like to put yourself forward as a Wonersh Parish Councillor for the Wonersh Ward, please get in touch with the clerk: call **892601** or email clerk@wonershparish.gov.uk; and/or download the application forms from our website, www.wonershparish.gov.uk.

If a number of people indicate their interest in the role by **Wednesday 4th February**, candidates will be asked to give a short verbal statement about why they are interested in the role, at the Council Meeting on Thursday 12th February.

What do Parish Councillors do?

Wonersh Parish Council is made up of 9 voluntary councillors - 4 from the Wonersh Ward, 4 from the Shamley Green Ward and 1 from Blackheath Ward - who meet once a month to discuss and act on issues of importance to the local community.

The Parish Council sets and monitors how a proportion of local taxes are spent in the Parish, makes comments on planning applications in the Parish and considers projects to help maintain, improve or enhance the local area.

Local Government is changing and Parish Councils are seeing an increase in the responsibilities and opportunities to influence decisions made that affect our local community.

What hours will I need to commit to the role?

The role is voluntary and unpaid. The Council generally holds meetings on the 3rd Thursday of the month at 7.30pm, usually in Wonersh Sports Pavilion.

There are opportunities to sit on committees and working groups, and the role can be as little or as much as you make it.

Magazine Distributors Needed!

If you have received a printed copy of this magazine through your door, it has been delivered by your local distributor - **many thanks** to them for their faithful service throughout the year.

But we now need more people to help with delivery to ensure that every house in Wonersh and Blackheath is covered. It is not a difficult task - each round is only 20-30 households, which need take you no more than 30 minutes. It's a great way to get some fresh air, and is an opportunity to meet your neighbours.

If you might be able to help in this way, please contact Deirdre Glynn-Jones via the Church Office: office@wonershchurch.org.uk.



VICAR: Rev'd David Peters	07521 090179	vicar@wonershchurch.org.uk
CHURCH OFFICE	01483 890266	office@wonershchurch.org.uk
(for all other church contacts)		

Village Contact Points

Wonersh & Shamley Green CE Primary School	892345
Headteacher: Mr Tim Cheesman	
Police:	Emergency 999 or 112 Non-emergency 101
Safer Neighbourhood Team	waverley@surrey.police.uk
Inspector Rob Brian (ID 3048)	Rob.Brian@surrey.police.uk
Sergeant Phil Bayman (ID 40264)	Phil.Bayman@surrey.police.uk
PC Gavin Greenaway (ID 40221)	Gavin.Greenaway@surrey.police.uk
PC Billy Dann	Billy.Dann2@surrey.police.uk
Waverley Borough Councillor: Michael Goodridge MBE	535108
	michael.goodridge@waverley.gov.uk
Lawnsmead Hall: Church Office	890266
Memorial Hall: Hilary Solt	07931 516910
WonCares (Monday to Friday)	894004
Wonersh Connections	www.wonershconnections.org
Wonersh Foundation (Chair: Graham Healy)	grahamjhealy@gmail.com

1st Wonersh Scout Group



Group Scout Leader: Robin Beeson **07766 641777**
email: 1stwonershgsl@gmail.com

Wonersh Parish Council

Blackheath, Shamley Green and Wonersh

www.wonershparish.gov.uk



Your councillors:

Please telephone any of us if you have a local issue you would like to discuss.

The Parish Office, located at Wonersh Sports Pavilion, is open by appointment - call the Parish Clerk (Lisa Davison) on **892601** or email clerk@wonershparish.gov.uk.

Email and telephone messages are monitored Monday to Thursday.

Anthony Shutes (Chair)	890831
Max Gibbs	07766 994005
Chris Howard	07879 841000
Ben Knight	07966 269182
Stephen Lavender	07966 533951
Rob Merriman	07711 654699
Kat Parkinson	07773 441164
Kevin Sloan	898472
VACANCY (Wonersh)	



Birtley House Nursing Home

Exceptional care in an idyllic setting - since 1932

Independent living, respite care, nursing care, long term care,
and end of life care within a beautiful Surrey Hills landscape

www.birtleyhouse.co.uk • Birtley Road, Bramley, GU5 0LB • 01483 892 055

Bullimores



ESTABLISHED
1928

Accountants for Life

- Tax
- Accounts
- Probate
- Inheritance Tax & Executorship

Bullimores LLP licensed to carry out the reserved legal activity of non-contentious probate in England & Wales by the ICAEW



For advice, call us on: **01306 880880** | Email: partners@bullimores.co.uk | Web: www.bullimores.co.uk



ABACUS



**Wonersh
Pest Control**
and



Wonersh Wasp Control

Pest Control you can count on
Telephone: 01483 299307

Inclusion of an advertisement in this magazine does not imply that the Church endorses, or takes responsibility for, any product or service provided.