



ST JOHN'S & ST MARTIN'S  
PARISH CHURCHES

# *Church Magazine* *October 2025*

*You're warmly welcome  
to our churches!*



## Building & Renovation Company

Quality building and carpentry work

Bespoke joinery

Painting and Decorating

Capel: 01293 871008

Email: info@lyneandco.co.uk

View examples of our building and joinery work at:

[www.lyneandco.co.uk](http://www.lyneandco.co.uk)



## MJP Plumbing & Heating Ltd

Will do any job from a tap washer to refitting your bathroom.

Boiler repairs and servicing.

Gas safe registered.

Contact Mike on 07768 844276  
or [mike@mjpplumbing.com](mailto:mike@mjpplumbing.com)



# Szabina

DESIGN & ALTERATIONS

## TAILORING AND ALTERATIONS

- RE-SIZE
- RE-STYLE
- RE-DESIGN







**Womenswear and Menswear Alterations,**  
Shortening, Lengthening, Let out, Take in,  
Zip replacement (coats, trousers, dresses, etc.)  
Prom / Wedding / Bridesmaid Dress Alterations  
Men's Suit and Trousers / Sleeves Alterations

**CURTAINS, BLINDS, HOME DECOR**



Made to measure Curtains  
Roman Blinds  
Curtains Alterations  
Cushions cover



# 07960143283

[szabina.farago@gmail.com](mailto:szabina.farago@gmail.com)

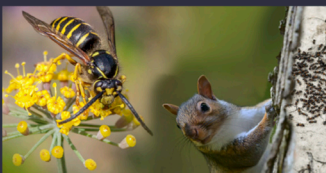


**COLLECT AND DELIVER**  
Whitley Manor Cottage, Bramley, GU5 0LL

## SOLVING PEST PROBLEMS OTHERS CAN'T - Since 2008

*From Gomshall*

ALL PESTS: Rats, mice, squirrels, wasps, woodworm, rabbits, deer fencing, loft insulation clearance



Surrey's highest rated pest control service on



- Ants 2 visits £172 +VAT
- Moles min 2 visits £60 +VAT per visit
- Rodents 3 visits £125 +VAT per visit
- Wasps £99 + Vat Guaranteed for the season

\*quote "Wondersh" for these prices

**For Homes & Businesses**

[www.pghbeegone.co.uk](http://www.pghbeegone.co.uk)

[sales@pghbeegone.co.uk](mailto:sales@pghbeegone.co.uk)

# 01483 273 478



**PGH**  
PEST PREVENTION

Hivegrove, Kings Court, Burrows Ln, Gomshall, GU5 9QE

PETER HIGGS

Visit our website



Proud members of  
**Checkatrade.com**  
Where reputation matters

**Beegone**  
LIVE BEE REMOVAL

Inclusion of an advertisement in this magazine does not imply that the Church endorses, or takes responsibility for, any product or service provided.



## October 2025

### Vicar's letter . . .

Dear Friends,

With Autumn now firmly with us, we may like to sit back with a warming drink and cast our minds back to the sunshine of the summer and the warm nights, sleeping with the window wide open. The harvest this year has generally been good, although inevitably some crops prefer more water than we have had. That said, I have read that the general trend is actually below the ten-year average so perhaps not as good as we may have thought.

The trees are showing clear signs of turning (even at the time of writing in early September). The lack of moisture has put trees under stress and many have lost their colour or are dropping leaves earlier than usual. It is evidence of the seasons, the changing pattern of our world and how even nature needs some time to stop and rest before bursting into growth once again.

There are, of course, the evergreens, which can maintain their leaf cover throughout the year, although even they were showing signs of stress during the hot weather.

It reminds me of the first of the Psalms (poetic songs) in the Bible, where we read: *'Blessed is the one...whose delight is in the law of the Lord, who meditates on God's law day and night. That person is like a tree planted by streams of water, which yields its fruit in season and whose leaf does not wither.'*

We will likely have had some positive and happy times this year, but perhaps mingled with some more difficult. What it is to be able to shine as a constant through both situations. This Psalm speaks about exactly that. Not because the person whose 'roots' are in God will be able to conquer all in their own strength (although they may be more resistant), but because the person in whom they put their trust, God, is constant.

As we see the harvest gathered and we hunker down for the autumn and winter months, we can be positive because new growth will come, in God's time and as God has ordained. We simply need to trust, and bear good fruit in season.

With love,

**David**

# October Diary

for St John's Church, Womersley

Thurs 2	10.30am	Holy Communion (BCP)
Sun 5		<b>16<sup>th</sup> SUNDAY AFTER TRINITY</b>
	10am	All-Age Harvest Service
Tues 7	9am	Morning Prayer
Thurs 9	10.30am	Morning Worship
Sun 12		<b>17<sup>th</sup> SUNDAY AFTER TRINITY</b>
	8am	Holy Communion (BCP)
	10am	Morning Worship
Tues 14	9am	Morning Prayer
Thurs 16	10.30am	Holy Communion (CW)
Sun 19		<b>18<sup>th</sup> SUNDAY AFTER TRINITY</b>
	10am	Holy Communion (CW)
Tues 21	9am	Morning Prayer
Thurs 23	10.30am	Discovery Service
Sun 26		<b>19<sup>th</sup> SUNDAY AFTER TRINITY</b>
	8am	Holy Communion (BCP)
	10am	Morning Worship
Tues 28	9am	Morning Prayer
Thurs 30	10.30am	Holy Communion (CW)

## November

Sun 2		<b>20<sup>th</sup> SUNDAY AFTER TRINITY</b>
	10am	All-Age Service
Tues 4	9am	Morning Prayer
Thurs 6	10.30am	Holy Communion (BCP)

.....

CW = Common Worship (2000)      BCP = Book of Common Prayer (Traditional 1662)





### Midweek Service

Every Thursday at 10.30am



Thursday services take place in St John's church and are followed by coffee and a chat in the Selwyn Room. Transport is provided for those needing it, and many say that this quiet and reflective service is the highlight of their week.

**Everyone is welcome!**

## Connect Groups

We want to encourage each other to grow in faith. Our small groups offer a place where we can learn and develop in an informal environment.

Groups of around 10-12 people meet on a regular basis (usually weekly) in local homes to study the Bible, pray, get to know each other and develop deeper friendships. Most groups meet in the evening, but there are some during the day.

If you are interested in joining a group or would like to find out more, then please contact **David Peters** ([vicar@wonershchurch.org.uk](mailto:vicar@wonershchurch.org.uk) / 07521 090179).

## Church Office

The Church Office (in The Vicarage) is open as follows:

**Monday** 9 am - 2 pm

**Tuesday - Thursday** 9 am - 1 pm

**Friday** 9 am - 2 pm

The office number is **01483 890266** (if outside office hours you may leave a message), or email [office@wonershchurch.org.uk](mailto:office@wonershchurch.org.uk).

## Copy Deadline for November 2025

Please submit articles for the November issue by **Tuesday 7<sup>th</sup> October**.

E-mail address for copy is [magazine@wonershchurch.org.uk](mailto:magazine@wonershchurch.org.uk).

For advertising, please contact John Gosden ([JohnGosden@aol.com](mailto:JohnGosden@aol.com) or tel.502076).

# Children and Families Update

Sadly, the unpredictable weather at the end of the summer meant we had to cancel our Family Fun Day this year. But the good news is that all our energy has been poured into planning something new and just as exciting!

Join us for our **Light Party** [see p.5] at **St. John's Church, WonerSh, on Friday 17<sup>th</sup> October, 4.30 – 6pm**. As the evenings draw in, we'll be celebrating light, joy and community with games, crafts, food and plenty of sparkle. Expect laughter, dancing, challenges to make you giggle, and even a few treats to take home. Children are encouraged to wear something bright or sparkly – we'll provide the glowing wristbands and fun extras.

Bring your family, bring your friends – and come and enjoy an evening where light shines brightest in the dark!

.....

And, in other news, as term gets back into full swing, our thriving **Kids Church** is open each week and you are so welcome to come and try us out! Our children are mostly aged 3-9 and we meet in The Vicarage to learn more about the love that God and Jesus have for us, through our favourite Bible stories, craft, games, snacks and friendship.

With love, Clare  
([clare@wonershchurch.org.uk](mailto:clare@wonershchurch.org.uk))



**Kids Church**  
St John's WonerSh

Bible Stories  
Crafts & Activities  
Games  
Songs & Prayer  
Friendship

Come & Join us at  
The Vicarage,  
St John's Church, WonerSh  
Sundays, 10-11.15am

[www.wonershchurch.org.uk](http://www.wonershchurch.org.uk)



**MUMS, BUMPS  
&  
BABIES**  
(UP TO CRAWLING)

**MONDAYS 10AM-MIDDAY**

THE VICARAGE, ST JOHN'S CHURCH,  
THE STREET, WONERSH, GUS OPG

TEA, COFFEE, HOME BAKED CAKES  
CHAT AND FRIENDSHIP

FREE PROFESSIONAL POSTNATAL AND  
SLEEP SUPPORT AVAILABLE

Contact: [clare@wonershchurch.org.uk](mailto:clare@wonershchurch.org.uk)





ST JOHN'S & ST MARTIN'S  
PARISH CHURCHES

## Men's Breakfast

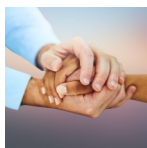
Come for a Fry Up! Sat Oct 11th 8.30am-10am  
Lawnsmead Hall, Wonerish



Please contact: [vicar@wonershchurch.org.uk](mailto:vicar@wonershchurch.org.uk) to  
book your free place

## Living with Loss

Every year we hold a service at St John's, Wonerish, which tries to allow space for people to remember those that they have loved and whom they see no more. This is held close to All Hallows in the church calendar, a day when all the 'saints' who have died are remembered with thanks.



The memories of those who have died will remain in our minds and hearts. They are part of us through what they have said, done, taught and simply been to us. It is right to remember them fondly and yet we recognise that our own lives continue, and so this service has a focus not on death, but on life.

This year the church will be open for personal reflection on '**Living with Loss**' on **2<sup>nd</sup> November from 3pm**, to pray and to light a candle if you wish. Come when you feel appropriate. A **30-minute service will be held at 4pm**, if you wish to stay, where we will light a candle for all those who have died over the last year and for those names given to us on the day by those present.

Do come and enjoy your memories, share some silence and give thanks to a loving, ever-present God who upholds us through the good times and the difficult.

Cast all your anxiety on Him  
*because He cares for you*  
(1 Peter 5:7)

# **‘The Mystery of God’**

## **St Augustine’s Abbey, Chilworth, GU4 8QR**

This autumn and winter, St Augustine’s Abbey invites you on a luminous journey into faith. Based on Bishop Robert Barron’s acclaimed series ‘**The Mystery of God: Who God is and Why He Matters**’, the sessions explore profound topics from the nature of divinity to the Trinity and God as Love, under the gentle guidance of Fr John Seddon OSB. Every gathering is designed to spark thoughtful reflection, complemented by tea/coffee, conversation and contemplation in the serene Assisi Room.



Continuing monthly on Saturday mornings, 10.30am - 12.20pm, from **11<sup>th</sup> October** until 14<sup>th</sup> February 2026. Free parking is available.

**£10 per person per session** (plus booking fee); booking is essential via [www.ticketsource.co.uk](http://www.ticketsource.co.uk) (search ‘Chilworth’). All proceeds support the monks’ life and work.

## **CHURCH TOUR –**

**Surrey Churches Preservation Trust**  
**Sat 4 Oct 2025, 10:30am–3:30pm**



- **St Peter & St Paul, Albury** (Romanesque-style, hillside setting)
- **Old Saxon Church, Albury Park** (Grade I, Saxon & Norman origins)
- **St Michael’s, Farley Green** (19thC barn church)

£10 members / £15 guests – booking essential (max 30).

Tickets: [www.ticketsource.co.uk](http://www.ticketsource.co.uk) (search ‘Surrey churches’)

Contact: Richard Morris – [scptrichardmorris@gmail.com](mailto:scptrichardmorris@gmail.com)

Funds support church repairs across Surrey.

Poster found in a Church in France... (translated):

"When you enter this church it may be possible that you hear "the call of God". However, it is unlikely that He will call you on your mobile. Thank you for turning off your phones. If you want to talk to God, enter, choose a quiet place and talk to Him. If you want to see Him, send Him a text while driving."



# Your Move, Made Simple

Whether you're ready to sell, just curious, or planning ahead for the future — we're here to make the process clear, straightforward, and stress-free.

Now's the time to get ahead. Start the conversation today and take the next step with confidence.



**Chantries  
& Pewleys**

01483 304 344

[shalford@chantriesandpewleys.com](mailto:shalford@chantriesandpewleys.com)



**PAOLOCAFIERO  
PERSONAL TRAINER**



**SPECIAL OFFER:  
10% OFF WHEN YOU PRE-PAY  
FOR 10 SESSIONS**

**LOCATIONS  
GODALMING, WOKING  
OR YOUR HOME**

**START YOUR FITNESS JOURNEY  
BOOK NOW!**

**CONTACTS:  
07500871129  
[P.CAF.FITNESS@GMAIL.COM](mailto:P.CAF.FITNESS@GMAIL.COM)**

## **SERVICES**

1-TO-1  
COUPLES  
GROUPS (1 TO 4)

## **FOCUS**

STRENGTH TRAINING  
STRENGTH IN CYCLING  
WEIGHT LOSS

## **MASON VOLLER LIMITED**

**NICEIC registered**

*Electrical Contractors - Domestic and  
Commercial - Installation & Repairs.*

Builders Yard, Barton Road, Bramley, GU5 0EB

[info@masonvoller.co.uk](mailto:info@masonvoller.co.uk) 01483 572763

## **RICHARD LEE**

**Painter & Decorator**

Experienced in all aspects of wall coverings,  
special effects, interior and exterior decorating.

**Over 30 years experience.**

**Tel: 01483 612055 / 07789685560 / 07717154392**

## **R.A. ROBERTSON & SONS**

High Street, Bramley.

Tel: Guildford 892207

[sales@robbo.co.uk](mailto:sales@robbo.co.uk)

*TV - Domestic appliances - Sales & Service*

## **WONERSH MEMORIAL HALL**

Your village hall - for parties, classes, clubs  
and now skittles evenings!

Online booking: [wonershmemorialhall.com](http://wonershmemorialhall.com)

Call Hilary Solt 07931 516910

or Louise Healy 01483 898539

If you're carrying something heavy,  
you don't have to carry it alone.

## PASTORAL & BEREAVEMENT SUPPORT

Life can sometimes present us with difficulties  
that feel overwhelming:

- The loss of someone close
- Family tensions or breakdown
- A difficult diagnosis
- Feeling isolated, exhausted, or numb

Our Pastoral and Bereavement Support Team is  
here to listen. We offer a free, safe, confidential  
space to talk with someone trained in pastoral  
care or bereavement support.

Get in Touch:

<https://www.wonershchurch.org.uk/>  
[office@wonershchurch.org.uk](mailto:office@wonershchurch.org.uk)



ST JOHN'S & ST MARTIN'S  
PARISH CHURCHES

## Meals Ministry

Are you recently bereaved? Facing serious illness?

Do you have a new baby?

Let us support you with some free home cooked  
meals delivered to your door



Please contact: [clare@wonershchurch.org.uk](mailto:clare@wonershchurch.org.uk)  
or phone: 01483 890266

## North Guildford Food Bank

We are well and truly into Autumn now. The evenings are dark and we're all spending more time indoors, which means that many of us have turned the heating on, or up, and our electricity bills will be rising. Thank you for helping us to help those who are struggling to stay on top of their bills.

A reminder that our Harvest Service at St John's will be on **5<sup>th</sup> October**. This is such an important time in the foodbank year when we can increase our stock in readiness for the busy winter months. We would be grateful for any of the usual tinned and non-perishable items, basic toiletries or cleaning liquids.

Our more specific requests for October are :

**Tinned meat**

**Tomato Ketchup**

**Spray Cleaner**

**Jam / Honey / Chocolate Spread / Marmite**

**Drinking Chocolate**

**Toothpaste / Toothbrushes**

In addition, we always need **strong carrier bags / bags for life**.

Many thanks, as always, for your continued support.

Donated items can be left in the foyer of St John's church, or in the crate on Rosie Couzens' doorstep (**10 Little Orchard Way, Shalford, GU4 8JY**).

If you would rather make a financial donation, please refer to our website: [northguildfordfoodbank.co.uk](http://northguildfordfoodbank.co.uk), which lists the ways you can donate (if you are a taxpayer, Gift Aid can be claimed by the Food Bank on personal donations).





## Meet Calum Prince

I was born and bred in Bramley. I probably grew up walking past a lot of you in this area. This part of the world is outstandingly beautiful and, whilst you're reading about what I get involved in, I'd like you just to give a thought to how blessed we are in the area of the Surrey Hills, both with the abundant natural forests and the beautifully kept gardens and parks of the area. Thank God for the Surrey Hills.

Growing up, I always had a passion for farming and producing my own vegetables and that's what I'm trying to bring and share to this church. Thiew (another garden enthusiast) and I have been heading a project to beautify the front of Wonerh Church, as well as provide fresh organic produce both for the church and the surrounding community.

I'd like to encourage all who feel free to come join us in our escapades. As well as connecting with God's creation and the outdoor life, it allows us to naturally approach curious onlookers and encourage the wider community to approach and interact with the church and its members, and to share God's love. It gives us a chance to express God's love for us in a physical very real way and join in part of his design and creation, growing living things and producing good food which builds us up. So that's what we do: simple digging, planting, composting and a bit of design, and pretty things from Thiew's side. I encourage everyone to get involved!

I'll leave you with a poem inspired by my grandad, a farmer from Salisbury:

When the lark ascends, in morning sun,  
We see the rolling fields of green,  
We smell the dewdrops fresh and new,  
When lark ascends the morning view.  
The crests of hills roll over land,  
The sparrows chatter in hedgerow bands,  
The farmer smokes a lonesome pipe,  
The lark ascends the break of night.  
We gather in the world anew,  
Woken with new breath,  
To taste the earth for one more day,  
Then see the lark's ascent.

---

## Church Walking Group

The Church walking group recently enjoyed a lovely sunny walk round Peaslake, with lunch at the Hurtwood Inn afterwards.

The next walk will be on **Tuesday 18<sup>th</sup> November** –  
further details from Catherine Keech  
([catherine@keechonline.com](mailto:catherine@keechonline.com)).



# Blackheath Focus

## October 2025



### Services at St Martin's

Wednesday 1 <sup>st</sup> October	Morning Prayer	9am
Sunday 5 <sup>th</sup> October	Harvest Service [see below]	10am
Wednesday 8 <sup>th</sup> October	Morning Prayer	9am
Sunday 12 <sup>th</sup> October	Services in Wonersh	8am / 10am
Wednesday 15 <sup>th</sup> October	Morning Prayer	9am
Sunday 19 <sup>th</sup> October	Choral Evensong	6pm
Wednesday 22 <sup>nd</sup> October	Morning Prayer	9am
Sunday 26 <sup>th</sup> October	Taizé-style Service [see p.11]	6pm
Wednesday 29 <sup>th</sup> October	Morning Prayer	9am
Sunday 2 <sup>nd</sup> November	Sung Holy Communion	6pm

## St Martin's Harvest Service and Blackheath Harvest Giving Day Sunday 5<sup>th</sup> October



We will again be supporting **Guildford Action** and **Guildford Hygiene Bank**. All donations very welcome: **tinned items, fresh fruit and vegetables** for Guildford Action; **hygiene products, washing powder, toothpaste and toilet paper** for the Hygiene Bank.

Please bring your gifts anytime and leave them in the church porch, or bring them to the **10am Harvest Service on Sunday 5<sup>th</sup> October**.

Produce to decorate the church would also be very welcome. These can be left in the Church on Friday, or on Saturday morning.

There will be a **Harvest Tea**, also celebrating Jan's ordination, in the afternoon [see p.11].

### Dates for your Diary



**Remembrance Service      Sunday 9<sup>th</sup> November, 10.50am**

Blackheath War Memorial on the Heath

.....

**Blackheath Carol Service      Sunday 7<sup>th</sup> December, 6pm**

St Martin's Church







Please join us for Morning  
Prayer every  
Wednesday at 9.00am



ST MARTIN'S BLACKHEATH  
OCTOBER 26TH  
6PM



LET  
JUSTICE  
ROLL  
DOWN

A VIGIL IN TAIZÉ STYLE  
FOR A WORLD IN TURMOIL

Join us for Afternoon Tea  
to celebrate Harvest, and Jan's Ordination

Sunday October 5th

3.30 pm to 5 pm

in Blackheath Village Hall

Do let us know if you can attend

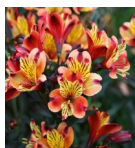
[community@wonershchurch.org.uk](mailto:community@wonershchurch.org.uk)



# Village News

## Wonersh & District Garden Club

On 1<sup>st</sup> October, our AGM will be followed by a talk on 'Women Gardeners of the 20<sup>th</sup> Century' by Cherrill Sands. The last century brought some emancipation for women, acceptance at Horticultural Colleges and, for some, artistic fulfilment in their garden. Hear about creative women and their gardens, including Gertrude Jekyll at Munstead Wood, Vita Sackville-West at Sissinghurst and Beth Chatto with her nursery 'Unusual Plants'. New members are always welcome, so attending the AGM would be a good way of meeting many of our local gardeners.



On 5<sup>th</sup> November, we will welcome Ben Cross to tell us about his interest in alstroemerias. Ben's family own and run Crosslands Flower Nursery, specialising in cut alstroemerias. Ben is an expert grower, public speaker, an ambassador for British flowers and founder of the British Flowers Rock Campaign. It should be an interesting evening.

All meetings are held in the Wonersh Memorial Hall; the doors open from 7pm.

For further details contact Hilary Goodridge: tel. 01483 535108 or email [hilarygoodridge@ymail.com](mailto:hilarygoodridge@ymail.com).

---

## U3A Wonersh & District

Your local U3A, covering Blackheath, Bramley, Chilworth,  
Shalford, Shamley Green and Wonersh



### What's on in October 2025 – join us for these activities

Wed 1	<b>Table Tennis:</b> Bramley Village Hall	Tues 21	<b>Tai Chi</b> (2 groups): Lawnsmead Hall
Thurs 2	<b>Mah Jong:</b> Bramley Library Room	Wed 22	<b>Table Tennis:</b> Bramley Village Hall
	<b>Latin:</b> Godalming		<b>Pub Lunch:</b> Hurtwood Inn, Peaslake
	<b>Pottery:</b> Farley Green	Thurs 23	<b>Line Dancing:</b> Shalford Upper Hall
Fri 3	<b>French:</b> Godalming		<b>Latin:</b> Godalming
Mon 6	<b>Pilates:</b> Lawnsmead Hall, Wonersh		<b>Pottery:</b> Farley Green
Tues 7	<b>Tai Chi</b> (2 groups): Lawnsmead Hall		<b>Speaker's Corner:</b> Sarah Slater, Lawnsmead Hall
	<b>Listening to Music:</b> Shalford Hall Club Room		
Wed 8	<b>Explore London:</b> Shakespeare & Dickens	Fri 24	<b>Art:</b> Bramley Village Hall
	<b>Table Tennis:</b> Bramley Village Hall	Mon 27	<b>Pilates:</b> Lawnsmead Hall, Wonersh
Thurs 9	<b>Line Dancing:</b> Shalford Upper Hall	Tues 28	(No Tai Chi)
	<b>Latin:</b> Godalming	Wed 29	<b>Table Tennis:</b> Bramley Village Hall
Mon 13	<b>Pilates:</b> Lawnsmead Hall, Wonersh		
	<b>Book Club:</b> Selwyn Room, Parish Church		
Tues 14	<b>Tai Chi</b> (2 groups): Lawnsmead Hall		
Wed 15	<b>Table Tennis:</b> Bramley Village Hall		
	<b>Coach Trip:</b> Standen House (NT)		
Mon 20	<b>Pilates:</b> Lawnsmead Hall, Wonersh		
	<b>Play Reading:</b> Selwyn Room, Parish Church		

*Join us for some very interesting talks, visits  
and activities. Newcomers are welcome.*

*For further details, please visit  
<https://u3asites.org.uk/wonersh>  
or phone Jacqui on 07814 379294.*

# Wonersh Cricket Club



The cricket season ended for Wonersh CC on Sunday 7<sup>th</sup> September with a Club Day, with multiple social matches across the day.

Not only has the weather this summer been excellent for cricket, but there has been much success on the pitch as well. The 1<sup>st</sup> XI secured promotion from their Saturday league coming second, losing only two matches all season; and also won the League Cup competition, beating Headley Old Freeman's by 19 runs in the final at Wonersh. In addition, the mid-week team got to the final of the Surrey Village Cup, losing to a very strong team from Wood Street; and we have had a full, and very successful, Sunday fixture list of friendly matches.

As we begin to think about the winter, and forward to 2026, we are looking for two people to help with small roles at the Club – as Treasurer; and a Project Manager for our replacement cricket net. Neither takes up much time, so if you are able to help out, please email [secretary@wonershcc.co.uk](mailto:secretary@wonershcc.co.uk).

---

## Wonersh Players



**The Wonersh Players** were formed in 1982 and are still going strong.

They write and produce their own pantomimes, always performing their traditional “late-late” panto at the Wonersh Memorial Hall during the February half-term holiday. After seeing their first show, a critic from a local magazine wrote “Nobody has more fun than the Wonersh Players”, and that atmosphere still remains. Now in their 5<sup>th</sup> decade, a couple of the founder members are still involved and, although the cast changes slightly from year to year, several of them have been active members for a very long time. With new members joining every year and exciting ideas still flowing, the Players will go from strength to strength.

They will be performing their next pantomime ‘**Snow White**’ in February 2026, and are looking for enthusiastic people to join their friendly team. If you fancy trying your hand as an actor, helping backstage with the Production Crew or with the Front of House Team, please email [wonershplayers@gmail.com](mailto:wonershplayers@gmail.com).

---

## Wonersh Speedwatch



Speeding through Wonersh is a perpetual issue, and makes life very difficult for residents trying to cross the road to the shop, pub, doctors and pharmacy. The Parish Council is taking this very seriously and is discussing with Surrey County Council plans for remodelling the whole Pepperpot area.

**Wonersh Speedwatch** has continued to be quite active over the summer. We now have a body-worn camera for volunteers to use, which can help identify vehicles but also provide a record of any issues we have with drivers. If you are interested in finding out about Speedwatch, please contact the Parish Clerk on **892601** or email [clerk@wonershparish.org](mailto:clerk@wonershparish.org).

# Wonersh United Reformed Church

Minister: Revd Graham Hoslett (tel: 07425 569807)

Facebook - Wonersh United Reformed Church



## October 2025

The call of Jesus Christ to each of us as Christians can be summed up in His words to Simon Peter in John 21:19: *"Follow me!"* He said the words "Follow me" 21 times in the Gospels. It's more than a simple invitation to walk behind Him. Following Jesus means to align our lives with His teachings and example and to embrace His values as our own. It means to take up our cross daily, even to laying down our lives for others. He said, *"Very truly I tell you, unless a kernel of wheat falls to the ground and dies, it remains only a single seed. But if it dies, it produces many seeds."* (John 12:24)

After 145 years of worship and witness on the Common, first as Tangley Chapel then Wonersh Congregational Church and then Wonersh URC, we are closing as a church on **Sunday, 19<sup>th</sup> October** following our closing service at 2.30pm.

It may seem faithless for any church to close however few we may be. How can any church believing in the God of the impossible, the God of resurrection, choose to close, no matter how few they have become? But our determination has to be to do what we believe the Lord is calling us to do. We must follow Him and His will for us as we understand it, even if and when that is to close.

As we close we are grateful that the good news of Jesus will continue to be celebrated and proclaimed in the village by Wonersh Church, and we pray God's blessing and the leading of the Holy Spirit on St. John's and the other churches in the parish.

In Philippians 1:3-6 we read: *"I thank my God every time I remember you. In every prayer for all of you, I always pray with joy, because of your partnership in the gospel from the first day until now, being confident of this, that He who began a good work in you will carry it on to completion until the day of Christ Jesus."*

God bless the village of Wonersh in the weeks, months and years to come, until He comes.

Revd Graham Hoslett



## Pastoral Care

Our love and care for each other permeates all we do within our communities at Wonersh and Blackheath. It is a thread that underpins all our various connections and activities throughout our church as we aim to support each other on the journey of faith. We also have specific roles and occasional courses for more focused support, including: **Bereavement Support** [see p.8] - **Home Visits and Communion** - **Connect Groups** [see p.3] - **Pre- and Post-Marriage Courses** - **Parenting** and **Finding Faith Groups** - **Meals Ministry** for those in need [see p.5].

For more information, please contact Jan Durrant: [office@wonershchurch.org.uk](mailto:office@wonershchurch.org.uk).



# Bramley & District Probus Club



**Bramley & District Probus Club** is open to all business and professional residents of Bramley, Womersley, Sharncliffe, Sharncliffe and the surrounding villages who have fully or partially retired from their normal business or profession. Membership is not restricted to just these two groups; it also embraces a plethora of other organisations - in fact anyone who held a position of responsibility during their professional life. Current members include ex-military officers from the Army, Navy and RAF.

We meet once a month at the lovely setting of Bramley Golf Club for a hearty lunch and to enjoy the convivial company of other members. Some lunches (e.g. summer BBQ and Christmas) are deemed to be special in that members are actively encouraged to invite a partner and/or guest.

In winter months of the year, we enjoy an after-lunch talk by interesting speakers. For example, we have the following talks booked:

- The Biopharmaceutical Industry - Vaughan Thomas
- National Trust: Sharncliffe Mill - David Hunt
- Mistakes I made during my Career - Tim Flesher
- Commonwealth War Graves Commission

Should you be interested in becoming a member, or would like more information, our Membership Secretary, David Nielsen, would be delighted to hear from you - email [dbnielsen@sky.com](mailto:dbnielsen@sky.com).



## Free Coffee Concert Thursday 9<sup>th</sup> October, 11.15am - 12pm Guildford Cathedral, GU2 7UP

Come and join us for another uplifting performance by the [MbM Contemporary Gospel Choir](#) (conducted by their founder Em Bollon), blending traditional gospel with modern rhythms in a celebration of hope, faith and community.

Teas and coffees are served from 10.30am; concert begins at **11.15am** and finishes at 12 noon, just in time for lunch! All are welcome to this free concert, no need to book, and free parking.

Seasons Café will be open for a delicious lunch, and our gift shop is open for browsing for any special presents.

For more information on events at the Cathedral in October, visit [guildford-cathedral.org/events/whats-on-october-2025](http://guildford-cathedral.org/events/whats-on-october-2025)



**Twinkle toes**  
 Mobile  
 foot care clinic

MEMBER OF  
  
 BPA

**Kirsten Hall** MCFHP MAFHP  
 07592 853178  
[twinkletoesfeet@outlook.com](mailto:twinkletoesfeet@outlook.com)

• All in the comfort of your home •

**LAWNSMEAD HALL**  
 A Victorian building, extensively  
 restored, with well-appointed and  
 comfortable facilities.  
 Located in the centre of Wonersh,  
 looking out over the cricket green.  
 To book either the Main Hall or the  
 smaller Turner Room, contact the Parish  
 Administrator on **01483 890266**, or  
 email [office@wonershchurch.org.uk](mailto:office@wonershchurch.org.uk)

**MULLARD**  
 FUNERALS — GODALMING SINCE 1897

INDEPENDENT FUNERAL DIRECTORS  
 & MEMORIAL MASONS



- 24 Hour professional & personal service
- Pre paid & pre arranged funerals
- Private chapels of rest

01483 860279 • [www.mullards.uk](http://www.mullards.uk)  
 121-123 High Street, Godalming  
 Surrey, GU7 1AG

**FM**

 **Seymours**

**TOP 6 TIPS TO SELL YOUR HOME**  
 in Wonersh & Blackheath

- Strong first impressions**  
 A tidy front garden & driveway goes a long way.
- Neutral tones. Natural light**  
 Makes rooms appear more bright, spacious and inviting.
- Uncluttered rooms**  
 Makes it easier for buyers to imagine their own plans.
- Fresh Flowers**  
 Sets the tone for a well cared for home and adds energy.
- Subtle touches**  
 With a welcoming scent. It can create a positive emotional response.
- Summer fair footfall**  
 Take advantage of the increased footfall with a 'For Sale' board.

**SPEAK TO US FOR TAILORED ADVICE ON SELLING YOUR HOME**

01483 576833 | [sales@seymours-guildford.co.uk](mailto:sales@seymours-guildford.co.uk) | 217 High Street, Guildford, GU1 3BJ

## Fruit & Veg. donations support Emzini

A big thank-you to everyone who has bought plants and given donations for fruit and vegetables over the last year. We have been able to give the money raised to the **Emzini** charity based in Knysna in the Western Cape in South Africa.

The charity is run by Penny and Ella who provide a safe house for homeless families and children whose parents cannot look after them because of alcohol and drug misuse. They provide 16 children with full-time education at local schools, plus housing, food, clothes and transport. Their goal is to educate the children to a level where they can move on to choose a career, train, receive a diploma, find employment and become independent.

Lately they have been trying to find alternative accommodation for one young single mum who has been with them for many years but now lives independently and has a job at a local guest house in Knysna. When her father died, he left his wooden house and big plot to his daughter. Sadly, once she was settled, her mother arrived and threatened to kill her daughter with a knife, saying the plot was hers. The mother is now living in the house with her boyfriend, whereas her daughter has been living in a dilapidated shack with sewage running past the door. Emzini had been able to buy



a new plot of land for her but obviously to build a new house was an additional cost. With the money raised from your donations we have been able to make a significant donation towards the cost of a new wooden house in a different part of the township. It is 6m x 15m with a small veranda and a small yard, with running water and a shared toilet. The daughter is absolutely thrilled and thanks God for His goodness to her, as it will enable her to remain independent and make the most of the opportunities that Emzini has been able to provide.

You can find out more about Emzini here: [www.emzinitours.co.za/](http://www.emzinitours.co.za/), or email [book@emzinitours.co.za](mailto:book@emzinitours.co.za) for further information and a newsletter.

---

## ‘Indigenous Spirituality’

### St Augustine’s Abbey, Chilworth, GU4 8QR

Continuing on 25<sup>th</sup> October until March 2026, ‘Indigenous Spirituality: A Global Exploration’ is a 6-month journey into ancient wisdom traditions from around the world. Guided by Sheila Longman, each session opens a different continent’s spiritual heritage: Ubuntu in Africa, Aboriginal lore, Native American traditions, Andean culture and the spiritual paths of early Britain. Held on selected Saturday mornings (10am - 12pm) in the peaceful Abbey setting, these gatherings invite you to rediscover the sacredness woven into every human story.



**£10 per person per session, or £25 for 3 people** (plus booking fee): advance booking via [www.ticketsource.co.uk](http://www.ticketsource.co.uk) (search ‘indigenous’).



Please visit [www.stcatherines.info](http://www.stcatherines.info) for more details.



## INFORMAL CONCERT

**Monday 13<sup>th</sup> October at 7pm**

Lower Atrium - no need to pre-book tickets.

.....



## BABY CATS | LET'S GET CREATIVE

**Friday 17<sup>th</sup> October | For 1-4 yrs**

Let us stimulate your child's creative mind and join us for an arts and crafts session.

9.30 - 10.30am | St Cats Prep Gym

There is no charge, but please book your place on [tinyurl.com/ytcrvwn](http://tinyurl.com/ytcrvwn).

# Cre8tivity

## Do you find it difficult to prioritise time for creative projects?

**Cre8tivity** is a small group meeting once a month at the Vicarage to encourage participation in the creative arts. Bring along any project you are working on (or would like to start). We have lots of assembled experience in knitting, sewing and crochet and would love to see what you are making. We can even offer help if you get stuck.

Dates for the rest of the Autumn are:

**Tuesday 14<sup>th</sup> October**

**Tuesday 11<sup>th</sup> November**

Each session will run from 8 - 9.30pm - bring a friend!

Further details from [community@wonershchurch.org.uk](mailto:community@wonershchurch.org.uk).



For people experiencing dementia and their partners, friends or carers.

**Come and be welcomed with music we all remember and meet people with similar interests over TEA & CAKES**

Donations appreciated

**1st and 3rd Monday - 2.15pm to 4.15pm**  
**Cranleigh Arts Centre GU6 8AS**

Just drop in or for more details contact  
Michael Wild 01483 274998 [mamwild@aol.com](mailto:mamwild@aol.com)

**Guildford & Godalming Croquet Club**  
**invites you to their**  
**Annual Quiz**

**Saturday 1<sup>st</sup> November**  
**7pm for 7.15pm start**

**Wilfrid Noyce Centre, Godalming, GU7 1DY**

**£15 per person (including a light supper)**

**Tables of 6 max.**

**Bring your own drinks and glasses**

**Numbers are limited so reserve your place at**  
[info@guildfordandgodalmingcroquetclub.co.uk](http://info@guildfordandgodalmingcroquetclub.co.uk)



## Bake & Brew



Phyllis Tuckwell is excited to launch their **Bake & Brew Campaign**, brand new for 2025. This October, show your support by hosting your own fun-filled event.

Whether it's with your friends, family, neighbours, colleagues or your whole community, you are invited to bring people together for a brew, some cake and a whole lot of good times - all while raising vital funds for Phyllis Tuckwell.

It's simple: all you need is a kettle, some mugs of tea or coffee, delicious cake and great company - *a Brew-tiful way to make a difference!* Pick any date that works for you - morning or afternoon, it's entirely your choice.

Lete's make time for what matters most. Because every chat, every cake slice and every mug truly matters. With every donation, you're enabling the provision of vital care now and into the future.

If you'd like to host your own Bake & Brew event, register for your pack or get in touch directly with Emily in our fundraising team on [fundraising@pth.org.uk](mailto:fundraising@pth.org.uk).

## Bramley Music Celebrity Recital 2025 Saturday 4<sup>th</sup> October, 7pm Holy Trinity Church, Bramley, GU5 0HD



Tickets are now on sale for this very special concert with famous international concert pianist **Piers Lane**. Piers will be putting our lovely Steinway Grand Piano through its paces with a superb programme of music:

- Chopin - 'Les Sylphides' pieces
- Six Rachmaninov Preludes
- Debussy - 'Clair de Lune'
- Strauss/Schultz-Evler - 'Arabesques on The Blue Danube'

This concert may well sell out quickly, so buy your tickets early - £15 (under 18/ students £5) - online from [bramleymusic2012@gmail.com](mailto:bramleymusic2012@gmail.com) or in person (cash only) from Robertsons in Bramley High Street. We are pleased to be supporting **The Meath Epilepsy Charity**.

.....

**A date for your diary:** Sunday 16<sup>th</sup> November, 4pm - Piano Quintet Concert  
**The Oxus Quartet** will be joined by **Margaret Roberts** at the piano to bring us music by Schumann, Piazzolla and Amy Beach. More details nearer the time.

# **An Evening with Rob Parsons: Reflections on the Journey Tuesday 4<sup>th</sup> November, 7.30 - 10pm Kingdom Faith Church, Horsham, RH13 5PX**

An Evening with Rob Parsons is a chance to journey with Rob through the moments that have shaped his life and are close to his heart.

By any standards, Rob has led a pretty interesting life. He has a long list of achievements - he founded **Care for the Family** over 35 years ago, is now the bestselling author of nearly 30 books and has been awarded an OBE.

But he's also dealt with his fair share of challenges and obstacles along the way. As a child he was told that he would never amount to anything, there was a time when his marriage was on the brink of collapse, and he questioned his true purpose in life.

During this event, he'll take an honest look back over the decades and unpack some of how he got where he is today and tap into a wealth of experience to help you on your own journey - whatever stage you're at.

***"Rob Parsons is one of the most inspirational speakers in the country today - motivating, practical, and giving you the sense that somebody has just turned a light on."*** (Rosemary Conley, author and broadcaster)

Early Bird tickets only **£6** until 7<sup>th</sup> October ( £11 thereafter) - book now through **Eventbrite**, or call **029 2081 0800**.



## **Memory Lane**

Whilst Memory Lane is primarily for people experiencing dementia, and their carers, the meetings are open to anyone feeling lonely who would like to meet others in joyful surroundings.

Last year's 'Joy in Music' concert was sold out, as so many came to enjoy the ML professional singers. Memory Lane was asked by many if a similar concert could be performed this year, so the ML musicians and singers will be back with **'Musical Memories'**, featuring songs from the 50s so well known by our audience. The concert is taking place on **Saturday 11<sup>th</sup> October** in **Cranleigh Village Hall** - for tickets, call **07876 528704**. It is hoped that this charity event will raise even more this year for **Alzheimer's Research**, who are making much progress in finding a cure for this cruel disease.



Memory Lane meets at 2.15pm every 1<sup>st</sup> and 3<sup>rd</sup> Monday in the Cranleigh Arts Centre. If you would like further details on these meetings, "Walk in the Park" or "Musical Memories", just call Memory Lane on **01483 274398** or email: **[mamwild@aol.com](mailto:mamwild@aol.com)**.

<b>VICAR: Rev'd David Peters</b>	<b>07521 090179</b>	<a href="mailto:vicar@wonershchurch.org.uk">vicar@wonershchurch.org.uk</a>
<b>CHURCH OFFICE</b>	<b>01483 890266</b>	<a href="mailto:office@wonershchurch.org.uk">office@wonershchurch.org.uk</a>
<b>(for all other church contacts)</b>		

## Village Contact Points

**Wonersh & Shamley Green CE Primary School** **892345**

Headteacher: Mr Tim Cheesman

**Police:** Emergency **999** or **112** Non-emergency **101**

Safer Neighbourhood Team

[waverley@surrey.police.uk](mailto:waverley@surrey.police.uk)

Inspector Rob Brian (ID 3048)

[Rob.Brian@surrey.police.uk](mailto:Rob.Brian@surrey.police.uk)

Sergeant Phil Bayman (ID 40264)

[Phil.Bayman@surrey.police.uk](mailto:Phil.Bayman@surrey.police.uk)

PC Gavin Greenaway (ID 40221)

[Gavin.Greenaway@surrey.police.uk](mailto:Gavin.Greenaway@surrey.police.uk)

PC Billy Dann

[Billy.Dann2@surrey.police.uk](mailto:Billy.Dann2@surrey.police.uk)

**Waverley Borough Councillor:** Michael Goodridge MBE **535108**

[michael.goodridge@waverley.gov.uk](mailto:michael.goodridge@waverley.gov.uk)

**Lawnsmead Hall:** Church Office **890266**

**Memorial Hall:** Hilary Solt **07931 516910**

**WonCares** (Monday to Friday) **894004**

**Wonersh Connections** [www.wonershconnections.org](http://www.wonershconnections.org)

### 1st Wonersh Scout Group



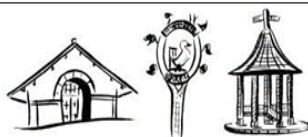
**Group Scout Leader:** Robin Beeson **07766 641777**

email: [1stwonershgsl@gmail.com](mailto:1stwonershgsl@gmail.com)

## Wonersh Parish Council

BLACKHEATH • SHAMLEY GREEN • WONERSH

[www.wonershparish.org](http://www.wonershparish.org)



### Your councillors:

Please telephone any of us if you have a local issue you would like to discuss.

The Parish Office, located at Wonersh Sports Pavilion, is open by appointment - call the Parish Clerk (Lisa Davison) on **892601** or email [clerk@wonershparish.org](mailto:clerk@wonershparish.org).

Email and telephone messages are monitored Monday to Thursday.

Anthony Shutes (Chair)	890831
Max Gibbs	07766 994005
Chris Howard	07879 841000
Ben Knight	07966 269182
Stephen Lavender	07966 533951
Rob Merriman	07711 654699
Kat Parkinson	07773 441164
Kevin Sloan	898472
George Sobek	07354 809130



# Birtley House Nursing Home

*Exceptional care in an idyllic setting - since 1932*

Independent living, respite care, nursing care, long term care,  
and end of life care within a beautiful Surrey Hills landscape

[www.birtleyhouse.co.uk](http://www.birtleyhouse.co.uk) • Birtley Road, Bramley, GU5 0LB • 01483 892 055

**Bullimores**



ESTABLISHED  
1928

## Accountants for Life

- Tax
- Accounts
- Probate
- Inheritance Tax & Executorship

Bullimores LLP licensed to carry out the reserved legal activity of non-contentious probate in England & Wales by the ICAEW



For advice, call us on: 01306 880880 | Email: [partners@bullimores.co.uk](mailto:partners@bullimores.co.uk) | Web: [www.bullimores.co.uk](http://www.bullimores.co.uk)



## ABACUS



**Wonersh  
Pest Control**  
and



## Wonersh Wasp Control



**Pest Control you can count on**  
**Telephone: 01483 299307**

Inclusion of an advertisement in this magazine does not imply that the Church endorses, or takes responsibility for, any product or service provided.