

WONERSH + BLACKHEATH

PARISH CHURCHES



Church Magazine

June 2025



## Building & Renovation Company

Quality building and carpentry work

Bespoke joinery

Painting and Decorating

Capel: 01293 871008

Email: info@lyneandco.co.uk

View examples of our building and joinery work at:

[www.lyneandco.co.uk](http://www.lyneandco.co.uk)



## MJP Plumbing & Heating Ltd

Will do any job from a tap washer to refitting your bathroom.

Boiler repairs and servicing.

Gas safe registered.

Contact Mike on 07768 844276  
or [mike@mjpplumbing.com](mailto:mike@mjpplumbing.com)

**I'm local  
No callout fee**

## Mac or PC Problem?

- Computer repairs
- Virus removal
- Network & Broadband
- Performance improvement
- Affordable websites
- Purchase advice

All explained in plain English  
Drop off or I can come to you

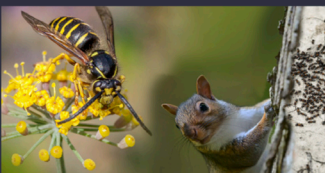
## Surrey Hills PC

T: 01306 400121 [www.surreyhillspc.co.uk](http://www.surreyhillspc.co.uk)  
M: 07771 665 863 [david@surreyhillspc.co.uk](mailto:david@surreyhillspc.co.uk)

## SOLVING PEST PROBLEMS OTHERS CAN'T - Since 2008

*From Gomshall*

ALL PESTS: Rats, mice, squirrels, wasps, woodworm, rabbits, deer fencing, loft insulation clearance



Surrey's highest rated pest control service on



- Ants 2 visits £172 +VAT
- Moles min 2 visits £60 +VAT per visit
- Rodents 3 visits £125 +VAT per visit
- Wasps £99 + Vat Guaranteed for the season

\*quote "Wondersh" for these prices

**For Homes & Businesses**

[www.pghbeegone.co.uk](http://www.pghbeegone.co.uk)

[sales@pghbeegone.co.uk](mailto:sales@pghbeegone.co.uk)

**01483 273 478**



**PGH**  
PEST PREVENTION

Hivegrove, Kings Court, Burrows Ln, Gomshall, GU5 9QE

PETER HIGGS

Visit our  
website



Proud members of  
**Checkatrade.com**  
Where reputation matters

**Beegone**  
LIVE BEE REMOVAL

Inclusion of an advertisement in this magazine does not imply that the Church endorses, or takes responsibility for, any product or service provided.



## June 2025

### Vicar's letter . . .

Dear Friends,

There is a phrase that we may have heard said, “seeing is believing”; meaning that if we see something for ourselves, we will then believe it. There are times, however, when we can believe without seeing for ourselves and that will often depend upon who it is speaking to us.

The disciples were in the same position after the death and resurrection of Jesus, celebrated a few weeks ago at Easter. One disciple in particular gained a nickname for his disbelief and became known as ‘doubting Thomas’. When he was told about the appearance of Jesus from the grave, he replied, “Unless I see the nail marks in his hands and put my finger where the nails were, and put my hand into his side, I will not believe.”

A few days later, he had that very opportunity as Jesus entered a locked room and held out his hands for Thomas to see the marks where the nails had been driven through. We can, therefore, believe the testimony of the disciples because they all saw for themselves the risen Christ. We can also believe the testimony of Jesus as he had foretold what would happen.

So it is, when we are told of the coming Holy Spirit, the spirit of God which can dwell among and in us, teaching, guiding and directing us into all things. And, as the disciples waited in Jerusalem as they had been commanded, the Holy Spirit came upon them and they were able to speak in different tongues, perform miracles and follow boldly the path of God.

Sunday 8<sup>th</sup> June is Pentecost Sunday, when we remember, celebrate and join in the gift of the Holy Spirit to all who believe. We may not be able to see the Spirit, but we can see the Spirit at work. We cannot see the wind, or electricity in a cable, but we can all see the effect that both have. It is the same with the Spirit of God: we can believe because we see the impact and the effect of the Spirit’s work among us. We can, therefore, “believe without seeing”.

With love,

*David*

# June Diary

for St John's Church, Womersley

Sun 1		<b>SUNDAY AFTER ASCENSION DAY</b>
	10am	All-Age Worship
Tues 3	9.30am	Morning Prayer
Thurs 5	10.30am	Holy Communion (BCP)
Sun 8		<b>PENTECOST SUNDAY</b>
	8am	Holy Communion (BCP)
	10am	Morning Worship
Tues 10	9.30am	Morning Prayer
Thurs 12	10.30am	Morning Worship
Sun 15		<b>TRINITY SUNDAY</b>
	10am	Holy Communion
Tues 17	9.30am	Morning Prayer
Thurs 19	10.30am	Holy Communion (CW)
Sun 22		<b>1<sup>st</sup> SUNDAY AFTER TRINITY</b>
	8am	Holy Communion (BCP)
	10am	Morning Worship
Tues 24	9.30am	Morning Prayer
Thurs 26	10.30am	Discovery Service
Sun 29		<b>2<sup>nd</sup> SUNDAY AFTER TRINITY</b>
	10am	Holy Communion
<b>July</b>		
Tues 1	9.30am	Morning Prayer
Thurs 3	10.30am	Holy Communion (BCP)
Sun 6		<b>3<sup>rd</sup> SUNDAY AFTER TRINITY</b>
	10am	All-Age Worship
.....		
CW = Common Worship (2000)      BCP = Book of Common Prayer (Traditional 1662)		





**Midweek Service**  
Every Thursday at 10.30am



Thursday services take place in the church and are followed by coffee and a chat in the Selwyn Room.

Transport is provided for those needing it, and many say that this quiet and reflective service is the highlight of their week.

**Everyone is welcome!**

## Connect Groups

We want to encourage each other to grow in faith. Our small groups offer a place where we can learn and develop in an informal environment.

Groups of around 10-12 people meet on a regular basis (usually weekly) in local homes to study the Bible, pray, get to know each other and develop deeper friendships. Most groups meet in the evening, but there are some during the day.

If you are interested in joining a group or would like to find out more, then please contact **David Peters** ([vicar@wonershchurch.org.uk](mailto:vicar@wonershchurch.org.uk) / 07521 090179).

## Church Office

The Church Office (in The Vicarage) is open as follows:

<b>Monday</b>	<b>9 am - 2 pm</b>
<b>Tuesday - Thursday</b>	<b>9 am - 1 pm</b>
<b>Friday</b>	<b>9 am - 2 pm</b>

The office number is **01483 890266** (if outside office hours you may leave a message), or email [office@wonershchurch.org.uk](mailto:office@wonershchurch.org.uk).

## Copy Deadline for July/August 2025

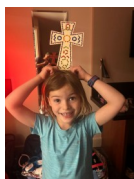
Please submit articles for the July/August issue by **Tuesday 10<sup>th</sup> June**.

E-mail address for copy is [magazine@wonershchurch.org.uk](mailto:magazine@wonershchurch.org.uk).

For advertising, please contact John Gosden ([JohnGosden@aol.com](mailto:JohnGosden@aol.com) or tel.502076).

# Children and Families Update

For our children and families, Easter this year saw a time of learning through creativity, as the children heard more about the significance of the cross in the Easter story and what it means for them.



We had a wonderful time on Good Friday, with children aged 2-10 coming to Lawnsmead to try their hand at various Easter crafts; 'calm but busy' was how one of the parents described the energy in the hall, and the children's focus was quite something. They also enjoyed helping Reverend David re-tell the Easter story and took part in a fabulous interactive Lego Easter trail.

In the churchyard there was a nature trail version taking the children on a hunt for various natural objects to complete challenges while, inside church, WSG's display of beautifully decorated crosses adorned tree branches in every corner. Each and every one, from Reception class to Year 6, had been created with such care and they looked absolutely stunning.




Now, as we head into the Summer term, we're turning our minds to how we can use our outside space for Kids Church, and are hoping to run our sessions outdoors during the Sunday services after half term. We would love your child to join us if they are aged 3 upwards; and for families with younger ones we have a 'come and go' creche set up in a room at the back of church, where the service is live streamed.


Do get in touch if you'd like any further information about any of our activities:

[clare@wonershchurch.org.uk](mailto:clare@wonershchurch.org.uk).

## ALL AGE WORSHIP

1st Sunday of the month at 10.00am



  
ST JOHN'S  
WONERSH



Kids  
Church

St John's WonerSh

Bible Stories  
Crafts & Activities  
Games  
Songs & Prayer  
Friendship

Come & Join us at  
The Vicarage,  
St John's Church, WonerSh  
Sundays, 10-11.15am

www.wonershchurch.org.uk

**MUMS, BUMPS  
&  
BABIES**  
(UP TO CRAWLING)

**MONDAYS 10AM-MIDDAY**

THE VICARAGE, ST JOHN'S CHURCH,  
THE STREET, WONERSH, GU5 0PG

TEA, COFFEE, HOME BAKED CAKES  
CHAT AND FRIENDSHIP

FREE PROFESSIONAL POSTNATAL AND  
SLEEP SUPPORT AVAILABLE

Contact: clare@wonershchurch.org.uk

**CHATTERBOX**  
PARENT & TODDLER GROUP

**THURSDAY**  
**9.30-11.00AM**

LAWNSMEAD HALL, WONERSH

TEA, COFFEE, CAKE  
SOFT PLAY, TOYS, STORY AND SONG TIME  
FRIENDLY CONVERSATION

www.wonershchurch.org.uk  
Contact: clare@wonershchurch.org.uk



WSG

## News from our Village School

[wsg.surrey.sch.uk](http://wsg.surrey.sch.uk) | [@MediaWsg](https://www.instagram.com/MediaWsg)

The school has been a hub of activity. We've played in numerous football and netball matches, alongside hockey at Charterhouse and a dance festival. We are very proud of our Year 6 children who won the inaugural Planet Soccer Cup against a number of local schools.



Thank you to Wonersh Church for lots of fun Easter workshops, and Shamley Green Gardening Club for helping every child plant a tomato seed for the village fete competition in June. We have also loved watching our baby chicks be born in the school bird box.

Good luck to our Year 6 children who completed their SATS in May; they then enjoyed a week of fun at Christian Youth Enterprises Sailing Centre in Chichester. We are also very excited to confirm places for our new Reception Class intake in September 2025!

## 8am Sunday Services at St John's

There has been a growing desire to connect with the 1662 service of communion and so, in future, the 8am services at St John's will all be following this tradition, with coffee served afterwards.

## North Guildford Food Bank

The number of people needing to access the Foodbank remains high despite the warmer weather so we are really grateful for your continued support. Many items are in short supply, particularly the following:



**Tea bags**

**Instant coffee (not decaf.)**

**Shampoo / Conditioner**

**Tinned spaghetti rings / hoops  
Soup**

In addition, we always need **strong carrier bags / bags for life.**

Donated items can be left in the foyer of St John's church, or in the crate on Rosie Couzens' doorstep (**10 Little Orchard Way, Shalford, GU4 8JY**).

If you would rather make a financial donation, please refer to our website: [northguildfordfoodbank.co.uk](http://northguildfordfoodbank.co.uk), which lists the ways you can donate (if you are a taxpayer, Gift Aid can be claimed by the Food Bank on personal donations).



ST JOHN'S  
WONERSH

# JAZZ

**Saturday 12<sup>th</sup> July 2025**  
**7pm at St John's Church**  
with  
*Liz Hayley's fabulous Jazz Ensemble*

**Tickets £15 incl. interval drinks**  
**hospitality@wonershchurch.org.uk**  
**01483 890266**  
(A donation from the proceeds will be made to  
Church Green Trust)

why not arrive earlier & bring a picnic to share with friends on Church Green - we may have sunshine!!



## Swing into action this spring



Some homes just need the right agent. Whether you've been on the market too long or want to launch with real impact, we're here to get you moving.

Our premium photography, engaging video, expert local advice and targeted strategy mean your home stands out for all the right reasons

**Make the shot that matters. arrange a valuation today.**

[shalford@chantriesandpewleys.com](mailto:shalford@chantriesandpewleys.com)

**01483 304344**

### **WONERSH MEMORIAL HALL**

Your village hall - very reasonable rates.  
Children's and family parties, classes, clubs  
and now skittles evenings!

*Call Hilary Solt 07931 516910  
or Louise Healy 01483 898539*

### **R.A. ROBERTSON & SONS**

High Street, Bramley.

Tel: Guildford 892207

[sales@robbo.co.uk](mailto:sales@robbo.co.uk)

*TV - Domestic appliances - Sales & Service*

### **PROFESSIONAL GARDENER**

46 years' experience

Pruning Maintenance (veg.) Hedges  
Fruit & Ornamental Trees Planting

**Mobile: 07340 525136**

### **RICHARD LEE**

**Painter & Decorator**

Experienced in all aspects of wall coverings,  
special effects, interior and exterior decorating.

**Over 30 years experience.**

**Tel: 01483 612055 / 07789685560 / 07717154392**

### **Tai Chi Class for Everyone on Monday evenings at Blackheath Village Hall**

With Dr Luke Zhang who is Double  
Beijing Tai Chi Champion and retired  
medical doctor.

**Tel: 07507275522**

**Email: [luke@taichiguildford.co.uk](mailto:luke@taichiguildford.co.uk)**

**Website: [taichiguildford.co.uk](http://taichiguildford.co.uk)**

### **MASON VOLLER LIMITED**

**NICEIC registered**

*Electrical Contractors - Domestic and  
Commercial - Installation & Repairs.*

Builders Yard, Barton Road, Bramley, GU5 0EB

[info@masonvoller.co.uk](mailto:info@masonvoller.co.uk) **01483 572763**

### **Would YOU like to advertise in this space?**

If so, ring John Gosden on **01483 502076**

or e-mail [johngosden@aol.com](mailto:johngosden@aol.com)





## Meet Lorima Cook

I'm delighted to be joining the parish as Curate and to have the chance to introduce myself to you all. Over the coming months, I look forward to meeting many of you - whether at services, community events, or simply out and about.

I was born and raised in Sydney, Australia, in a Christian household where faith was central to life. With maternal grandparents who were missionaries and a mother deeply committed to prayer, faith was never just a Sunday obligation but a way of being.

Before training for ordination, I studied and worked in politics, with experiences in Sydney, the USA, Namibia and London, drawn to questions of justice and governance. Yet, I increasingly felt called back to the Church - not just as a place of worship, but as a community of transformation.

My journey to ordination has been shaped by diverse experiences, from living in intentional Christian communities to working across cultures. These experiences deepened my passion for intercultural mission and the Church's role in reflecting God's diverse kingdom. I trained for ministry at Ridley Hall, Cambridge and have a strong conviction that the Church must be a space where all are seen, known, and valued as bearers of God's image.

One of the things I am most looking forward to in my time here is getting to know the people who make up this parish - not just those who come to church on Sundays, but also those who are part of the wider life of Womersley and Blackheath. The Church exists for everyone, and I am eager to be part of the ways we connect, serve and grow together.

I have already been struck by the warmth of this community and the many ways in which people contribute to the life of the parish. Whether through worship, outreach, schools, or simply being good neighbours, it is clear that this is a place where faith is lived out in real and meaningful ways. I am excited to learn more about village life - every place has its own character, and I am keen to discover what makes this community unique.

Outside of ministry, I enjoy crafting and travelling, and I expect I will soon pick up road cycling to explore these beautiful hills.

Thank you for the heartfelt welcome I've already received. I look forward to sharing this next season with you all.

*Lori*

---

## Church Walking Group

The next walk will be on **Thursday 19<sup>th</sup> June**. Further details available from Catherine Keech ([catherine@keechonline.com](mailto:catherine@keechonline.com)).







ST JOHN'S & ST MARTIN'S  
PARISH CHURCHES

## Men's Breakfast

Come for a Fry Up! 7th June 8.30am-10am  
Lawnsmead Hall, Wonerish



Please contact: [vicar@wonerishchurch.org.uk](mailto:vicar@wonerishchurch.org.uk) to  
book your free place



ST JOHN'S & ST MARTIN'S  
PARISH CHURCHES

## Meals Ministry

Are you recently bereaved? Facing serious illness?  
Do you have a new baby?  
Let us support you with some free home cooked  
meals delivered to your door



Please contact: [clare@wonerishchurch.org.uk](mailto:clare@wonerishchurch.org.uk)  
or phone: 01483 890266

WONERSH + BLACKHEATH  
PARISH CHURCHES

## VOLUNTEERS NEEDED

Would you be able to spare a  
couple of hours a month  
delivering our church  
magazine?

Please contact:  
[office@wonerishchurch.org.uk](mailto:office@wonerishchurch.org.uk)

WINTERSHALL  
*Experience the story*




The Life of Christ  
*The greatest story of all time*

17 - 21 June 2025  
10am - 3.30pm

Our powerful, biblical, outdoor drama  
takes you back to a time when  
Jesus lived on earth.

See the remarkable events of Jesus' life  
re-enacted as you follow the actors  
around Wintershall's beautiful lakes  
and ancient woodland.



**BOOK NOW**  [wintershall.org.uk](http://wintershall.org.uk)  
[admin@wintershall.org.uk](mailto:admin@wintershall.org.uk)  
Wintershall, Bramley, Surrey GU5 0LR  
Registered Charity Number 1167111



# Blackheath Focus

## June 2025



### Services at St Martin's

Sunday 1 <sup>st</sup> June	Sung Holy Communion	10am
Sunday 8 <sup>th</sup> June	<i>Services in Wonersh</i>	8am / 10am
Sunday 15 <sup>th</sup> June	Choral Evensong	6pm
Sunday 22 <sup>nd</sup> June	Taizé-style Service	6pm
Sunday 29 <sup>th</sup> June	<i>Service in Wonersh</i>	10am
Sunday 6 <sup>th</sup> July	Sung Holy Communion	10am

## ONE MIDSUMMER EVENING

Song Reflection Stillness

In Taizé style

6pm Sunday June 22<sup>nd</sup>

St Martin's Church Blackheath

Followed by drinks and nibbles



## Blackheath Care Team

The Blackheath Care Team has a pool of volunteers for residents in Blackheath who need a lift to hospital appointments, or dentist or surgery appointments; the volunteers can also collect prescriptions, etc.

If you need assistance, please contact Penny Kirkwood on **07973 836987** (phone or text), or otherwise Alex Jones on **07810 486521**.

We are happy to help!

## Blackheath May Fair

Blackheath Fair has been run for over 50 years - this year sponsored by the local estate agent Terra Cotta. Several thousand people visited, braving the odd rain shower, creating a fantastic atmosphere.

The Fair's focus has always been on traditional family fun stalls and quality refreshments (including a real ale beer tent). There was live entertainment from our very own Ralph Broadbent, Charlotte Maggs, Firebottles and the supremely talented young Heidi Flo. We had performances from the wonderful Pilgrim Morris dancers, Punch and Judy who thrilled young children, and a stilt walker adding real colour to our event. The beautiful St Martin's Church in the heart of the village opened their doors; and Wonersh & Shamley Green Primary School parents served cream teas in our Village Hall. Our fair is a community event and we are most fortunate to have the support of St Augustine's Abbey and their car parking facilities.

We shall be making donations to local charities including those mentioned above. So, a great event of which we are all most proud.



# Village News

## Wonersh & District Garden Club

During the Summer months, most of our activities are for members only.

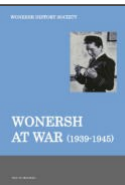
Please contact Hilary Goodridge: [hilarygoodridge@ymail.com](mailto:hilarygoodridge@ymail.com) or 01483 535108 for more information regarding our planned garden visits.

Our talks start again from 1<sup>st</sup> October.

### Wonersh at War

To mark the 80<sup>th</sup> anniversary of VE Day, Wonersh History Society has produced a booklet entitled 'Wonersh at War (1939-1945)'.

This may be viewed via the Society's website: [wonershhistory.co.uk](http://wonershhistory.co.uk).



### Wonersh United Reformed Church

Minister: Revd Graham Hoslett (tel: 07425 569807)

Facebook - Wonersh United Reformed Church

### June 2025 - News

Hello from Wonersh URC.

We are very much looking forward to **Film Club** on **Wednesday 4<sup>th</sup> June**, when we will be showing Kenneth Branagh's film 'Belfast' (2021). We also have a **How to Pray** course from 7-9pm continuing on **11<sup>th</sup> and 25<sup>th</sup> June**.

And on **Sunday 29<sup>th</sup> June** at **6pm**, we have **Songs of Praise on the Lawn** with Godalming Band - always a wonderful time of praise led by the band in a beautiful setting. All welcome - just come along, or ring me on **07425 569807** for information.

God bless.

*Revd Graham Hoslett*



DATES	DETAILS
Sunday, 1 <sup>st</sup> June	10.30am: Graham Pearcey
Wednesday, 4 <sup>th</sup> June	7pm: Film Club - 'Belfast'
Sunday, 8 <sup>th</sup> June	10.30am: Livestreamed Service
Wednesday, 11 <sup>th</sup> June	7pm: How to Pray
Sunday, 15 <sup>th</sup> June	10.30am: Vivien Gerhold
Sunday, 22 <sup>nd</sup> June	10.30am: Livestreamed Service
Wednesday, 25 <sup>th</sup> June	7pm: How to Pray
Sunday, 29 <sup>th</sup> June	6pm: Songs of Praise on the Lawn





## Donations Sought for Trees to be Planted in the Barnett Hill Fields

The Parish Council is so pleased to see the number of residents enjoying the Barnett Hill Fields and Healy's Wood. Thank you to those who have donated gates and offered to donate trees. The gates will continue to be installed by volunteers over the next months, at the same time as starting to repair fencing.

The Parish Council has agreed to plant some eight standard trees (probably native Oaks or disease-resistant Elm) in the upper field together with a row of trees along the side of the smaller field. Indeed two have already been planted. The volunteer Wonersh Environmental Advisory Group (WEAG) will aim to plant these trees in late autumn/winter and are seeking donations. It is expected that each tree will cost £150 (including delivery and planting ancillaries), plus £25 for an optional plaque. Chestnut stakes and railing will be sourced from the required thinning of trees in Healy's Wood.

Please contact [anthony.shutes@wonershparish.org](mailto:anthony.shutes@wonershparish.org) if you are interested in making a donation, which can be made via the Wonersh Foundation Charity and hence allow Gift Aid to be claimed.

## U3A Wonersh & District

Your local U3A, covering Blackheath, Bramley, Chilworth,  
Shalford, Shamley Green and Wonersh



### What's on in June 2025 – join us for these activities

Mon 2	<b>Pilates:</b> Lawnsmead Hall, Wonersh	Wed 18	<b>Table Tennis:</b> Bramley Village Hall
Tues 3	<b>Tai Chi</b> (2 groups): Lawnsmead Hall		<b>Pub Lunch:</b> Drummond Arms, Albury
	<b>Listen to Music:</b> Shalford Club Room	Thurs 19	<b>Latin:</b> Godalming
Wed 4	<b>Table Tennis:</b> Bramley Village Hall		<b>Pottery:</b> Farley Green
Thurs 5	<b>Mah Jong:</b> Bramley Library Room	Fri 20	<b>French:</b> Godalming
	<b>Latin:</b> Godalming	Mon 23	<b>Pilates:</b> Lawnsmead Hall, Wonersh
	<b>Pottery:</b> Farley Green	Tues 24	<b>Tai Chi</b> (2 groups): Lawnsmead Hall
Fri 6	<b>French:</b> Godalming	Wed 25	<b>Table Tennis:</b> Bramley Village Hall
Mon 9	<b>Pilates:</b> Lawnsmead Hall, Wonersh	Thurs 26	<b>Coach Outing:</b> Wilton House, Salisbury
	<b>Book Club:</b> Selwyn Room, Parish Church		<b>Line Dancing:</b> Shalford Upper Hall
Tues 10	<b>Tai Chi</b> (2 groups): Lawnsmead Hall		<b>Latin:</b> Godalming
Wed 11	<b>Table Tennis:</b> Bramley Village Hall	Fri 27	<b>Art:</b> Bramley Village Hall
Thurs 12	<b>Line Dancing:</b> Shalford Upper Hall	Mon 30	<b>Pilates:</b> Lawnsmead Hall, Wonersh
	<b>Latin:</b> Godalming	<div style="border: 1px solid blue; padding: 10px;"> <p><i>Join us for some very interesting talks, visits and activities. Newcomers are welcome. For further details, please phone Jacqui on 07814 379294, or visit <a href="https://u3asites.org.uk/wonersh">https://u3asites.org.uk/wonersh</a></i></p> </div>	
Fri 13	<b>Crafts:</b> Shalford Upper Hall		
Mon 16	<b>Pilates:</b> Lawnsmead Hall, Wonersh		
Tues 17	<b>Tai Chi</b> (2 groups): Lawnsmead Hall		
	<b>Short Walk:</b> meet outside Shackleford PO		



## Memory Lane

The first meeting this month, on **Monday 2<sup>nd</sup> June** in the Cranleigh Arts Centre, will be followed by a Walk In The Park the following Monday morning at 10.30am. These are monthly strolls around Knowle Park usually ending with a



singsong over coffee and chats (see pictures left and right).

The next meeting at the Arts Centre will be at 2.15pm on **Monday 23<sup>rd</sup> June** this month (note the change in date instead of the usual 3<sup>rd</sup> Monday of the month).



The meeting on **Monday 7<sup>th</sup> July** will be continuing the Summer theme in music and activities.

We will then be returning to regular meeting dates as follows:-

1<sup>st</sup> and 3<sup>rd</sup> Monday each month, 2.15pm at the Cranleigh Arts Centre, sandwiching Walk in The Park at 10.30am on the 2<sup>nd</sup> Monday.

Everyone is of course made welcome by the friendly Memory Lane Teams and many visitors. For details, just telephone Memory Lane on **01483 274398** or email [mamwild@aol.com](mailto:mamwild@aol.com).

---

## Bramley Music - 'Inspired by Dance'

### Sunday 8<sup>th</sup> June, 4pm

### St Andrew's Church, Grafham

Have you ever heard the evocative combination of **accordion** and **saxophone** before? Now is your chance! Come and hear the renowned **Mikeleiz-Zucchi Duo** ([mz-duo.com](http://mz-duo.com)) give an entertaining concert in the historic surroundings of St Andrew's.



Their programme is inspired by dance music from different eras and cultures: folk music from Spain, Scotland and Romania filtered through the lenses of classical composers; effervescent contemporary re-imaginings of dance; 20<sup>th</sup> century interpretations of the Baroque dance suite; and tangos of all varieties.

Tickets are **£15** (£5 for under 18s): online from [bramleymusic2012@gmail.com](mailto:bramleymusic2012@gmail.com), or in person (cash only) from Robertson's in Bramley High Street. Free glass of wine / soft drink included. Proceeds towards the restoration of St Andrew's Church.

Parking at the Grafham Room (GU5 0LJ, on the A281), 300 yards north of the church.



# ARTS WEEK 9-15 JUNE 2025



**ST JAMES'  
CHURCH  
SHERE**

**A week celebrating  
the interaction  
of words, art,  
music and faith**

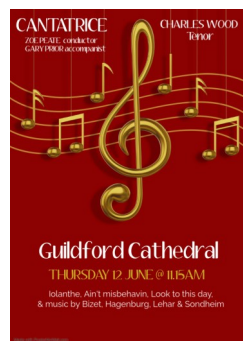
Come and join us for an exciting programme of daily events: visit [www.parishofshere.com](http://www.parishofshere.com) and click on the blue Arts Week banner on the home page for details.

---

## **Coffee Concert** **Thursday 12<sup>th</sup> June,** **10.30am - 12pm** **Guildford Cathedral, GU2 7UP**

Enjoy beautiful choral music from the [Cantatrice Choir](#) in our free monthly concert series. Coffee will be served from 10:30am, with the concert starting promptly at 11:15am.

For more information on events at the Cathedral in June, visit [guildford-cathedral.org/events/whats-on-june-2025](http://guildford-cathedral.org/events/whats-on-june-2025).



Please visit [www.stcatherines.info](http://www.stcatherines.info) for more details.



## **BABY CATS | IN THE GARDEN**

**Friday 13<sup>th</sup> June | For 0-4 yrs**

An opportunity for your little ones to explore and enjoy hands-on activities in the outdoors.

9.30 - 10.30am | St Cats Prep Gym

There is no charge, but please book your place on [tinyurl.com/mputauka](http://tinyurl.com/mputauka).

**Twinkle toes**  
 Mobile foot care clinic  
 Kirsten Hall MCFHP MAFHP  
 07592 853178  
 twinkletoesfeet@outlook.com  
 • All in the comfort of your home •

**LAWNSMEAD HALL**  
 A Victorian building, extensively restored, with well-appointed and comfortable facilities.  
 Located in the centre of Wonersh, looking out over the cricket green.  
 To book either the Main Hall or the smaller Turner Room, contact the Parish Administrator on 01483 890266, or email [office@wonershchurch.org.uk](mailto:office@wonershchurch.org.uk)

**Szabina**  
 DESIGN & ALTERATIONS  
 TAILORING AND ALTERATIONS  
 Womenswear and Menswear Alterations, Shortening, Lengthening, Let out, Take in, Zip replacement (coats, trousers, dresses, etc.)  
 Prom / Wedding / Bridesmaid Dress Alterations  
 Men's Suit and Trousers / Sleeves Alterations  
 CURTAINS, BLINDS, HOME DECOR  
 Made to measure Curtains  
 Roman Blinds  
 Curtains Alterations  
 Cushions cover  
 07960143283  
[szabina.farago@gmail.com](mailto:szabina.farago@gmail.com)  
**COLLECT AND DELIVER**  
 Whipley Manor Cottage, Bramley, GU5 0LL

BOOK A VALUATION TO WIN A  
**£10,000 HOLIDAY**  
  
 Scan here to find out more  
 \*TERMS AND CONDITIONS APPLY  
  
**Seymours**

**MULLARD**  
 FUNERALS  
 GODALMING SINCE 1897  
 INDEPENDENT FUNERAL DIRECTORS & MEMORIAL MASONS  
  
 - 24 Hour professional & personal service  
 - Pre paid & pre arranged funerals  
 - Private chapels of rest  
 01483 860279 • [www.mullards.uk](http://www.mullards.uk)  
 121-123 High Street, Godalming  
 Surrey, GU7 1AG  
**FM**

# **Manager URGENTLY Needed for the Villages Wednesday Club - Would this suit you?**

We are urgently looking for a new Manager to run the Villages Wednesday Club day centre ([fourvillages.co.uk](http://fourvillages.co.uk)) at Blunden Court in Bramley. We provide a day out each week for elderly people living in the local community who are a bit lonely and isolated. They have a chat over morning coffee, a cooked lunch, afternoon tea and entertainment - and this gives their carers a day off too. The role of Manager is interesting and varied, and you will be helping to provide a fantastic service to improve the lives of local elderly people.

As Manager, you would work with the Assistant Manager and a great team of volunteers to provide a warm, friendly and caring environment. The role involves organising the volunteers and activities, whilst maintaining simple records (such as registers, rotas and petty cash), as well as occasional admin such as updating risk assessments, etc. You would get to know the members, and liaise with their families and health professionals as necessary. The role may suit someone who has nursing or care experience, or has worked with elderly people, but neither of these are essential - it's more important that we find someone who is friendly, caring and practical!

Whilst the role is voluntary (not salaried) a nominal amount is paid, as a retainer, each quarter. You would not be expected to attend the day centre every week, but would usually alternate weeks with our very able Assistant Manager, and our wonderful team of volunteers are a great help too!

For more information, please contact **Sue Searle** on **07771 558541**  
or email [manager@fourvillages.co.uk](mailto:manager@fourvillages.co.uk).

---

## **Support for Local Ukrainians**



You may not know that Waverley Borough Council has a scheme to lend Ukrainians up to six months' rent if they are lucky enough to secure a rental property. This is the only way they can rent unless they have a guarantor. The loan is paid back monthly, and the scheme has worked well. However, when the time comes for them to move again, a second loan is not available, and some landlords require more than six months' rent upfront.

A couple of years ago, Godalming's **Ukrainian Support Group** decided that the money they had raised for their group would be used in a similar way. Due to their success and achievements, the Group now needs more funds and are asking if people can donate to support this initiative. To find out how you can help and make a real difference, contact [cherrygower@gmail.com](mailto:cherrygower@gmail.com).

# **Surrey Highways Open Day**

## **Saturday 14<sup>th</sup> June, 11.30am - 5.30pm**

### **Merrow Depot, Guildford, GU4 7BQ**



Get ready for a fantastic day out for the whole family!

Last summer, hundreds of you joined us to see behind the scenes of Surrey Highways - and we had an amazing time! Kids loved playing 'hook-a-duck', climbing onto real rollers and gritters, and setting up their own mini-roadworks on our giant play mat. Grown-ups had the chance to chat with our teams, learn about exciting projects like Hydrock drainage and road resurfacing, and sign up for the latest news.

This year, we're bringing back all your favourites - plus even more games, vehicles to explore, and ways for you to get involved and have your say about the future of our roads and transport:

- Big trucks and machinery to climb aboard
- Fun games and activities for kids (and adults too!)
- Meet the teams who keep Surrey moving
- Find out about new projects and plans
- Share your ideas and feedback

Whether you're 5 or 95, there's something for everyone - and it's completely **FREE to attend!**

Don't miss out - visit our [Surrey Highways Open Day 2025](#) webpage to find out where to park and other useful information.



## **Volunteers Needed**

Phyllis Tuckwell's Farncombe shop is currently looking for more volunteers - could you join its team? As a volunteer, you'll take and sort through donations, price stock, and chat to and serve customers. All volunteers are offered ongoing support and training.

To find out more, contact the Voluntary Services team on **01252 729400** or email [voluntary.services@pth.org.uk](mailto:voluntary.services@pth.org.uk).

# **Bramley Open Gardens**

## **supporting Phyllis Tuckwell Hospice Care**

### **Saturday 14<sup>th</sup> / Sunday 15<sup>th</sup> June, 2 - 5pm**



Four very different gardens in Mill Lane and Snowdenham Lane will be opening their gates to visitors to support the invaluable work of the Phyllis Tuckwell in caring for patients and their families, both in the hospice and at home. The hospice needs £25k a day to maintain its services and usually gets only around 20% of this from the NHS / Government. They are in the process of building a new hospice in Farnham and need to raise the final £1m to complete the project.

Come and explore two charming walled Victorian cottage gardens, a large garden with a magnificent walled kitchen garden that has been in cultivation for over 200 years, and the garden surrounding the old Mill with a newly planted woodland area.



Tickets **£5** (children U16 free) from Summerpool House or Bramley Mill. Refreshments with homemade cakes at Bramley Mill, together with sales of plants and handmade cards. Cash only, please.

Parking as indicated in the village (it is not possible to park in either Mill Lane or Snowdenham Lane).



## **Farewell Cafés**

### **Encouraging honest and thoughtful conversations about death and dying over coffee and cake**

Death is an inevitable part of life yet most of us find it a very difficult topic to talk about. We want to normalise the conversation and help lead the discussion by providing a safe and informal space to talk about your thoughts and feelings around death and dying.

Our Farewell Cafés are free and open to anyone, to speak freely and without judgement. There is no set agenda for a Farewell Café meeting, just facilitated discussion following the interests of those attending.

Taking time to reflect on death is something we can all do. When we spend time talking about death, we find that it helps remove the fear around it.

Come along to our next Farewell Café and join in the conversation!

For more information on our Farewell Cafés, please visit [www.brigitte-trust.org](http://www.brigitte-trust.org), email [admin@brigitte-trust.com](mailto:admin@brigitte-trust.com) or call 01306 881816.



# Wonersh Village Fair and events over the years



**Don't miss the Wonersh Traditional Fair in 2025!**  
**Sunday 6<sup>th</sup> July at 12:30pm**

Special thanks to Wonersh History Society for finding all these pictures

Sponsored by:





<b>VICAR: Rev'd David Peters</b>	<b>07521 090179</b>	<a href="mailto:vicar@wonershchurch.org.uk">vicar@wonershchurch.org.uk</a>
<b>CHURCH OFFICE</b>	<b>01483 890266</b>	<a href="mailto:office@wonershchurch.org.uk">office@wonershchurch.org.uk</a>
<b>(for all other church contacts)</b>		

## Village Contact Points

**Wonersh & Shamley Green CE Primary School** **892345**  
 Headteacher: Mr Tim Cheesman

**Police:** Emergency **999** or **112** Non-emergency **101**  
 Safer Neighbourhood Team [waverley@surrey.police.uk](mailto:waverley@surrey.police.uk)  
 Inspector Rob Brian (ID 3048) [Rob.Brian@surrey.police.uk](mailto:Rob.Brian@surrey.police.uk)  
 Sergeant Phil Bayman (ID 40264) [Phil.Bayman@surrey.police.uk](mailto:Phil.Bayman@surrey.police.uk)  
 PC Gavin Greenaway (ID 40221) [Gavin.Greenaway@surrey.police.uk](mailto:Gavin.Greenaway@surrey.police.uk)  
 PCSO Felicity Lock (ID 14267) [Felicity.Lock@surrey.police.uk](mailto:Felicity.Lock@surrey.police.uk)

**Waverley Borough Councillor:** Michael Goodridge MBE **535108**  
[michael.goodridge@waverley.gov.uk](mailto:michael.goodridge@waverley.gov.uk)

**Lawnsmead Hall:** Church Office **890266**

**Memorial Hall:** Hilary Solt **07931 516910**

**WonCares** (Monday to Friday) **894004**

**Wonersh Connections** [www.wonershconnections.org](http://www.wonershconnections.org)

### 1st Wonersh Scout Group



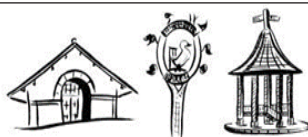
**Group Scout Leader:** Robin Beeson **07766 641777**

email: [1stwonershgsl@gmail.com](mailto:1stwonershgsl@gmail.com)

## Wonersh Parish Council

BLACKHEATH • SHAMLEY GREEN • WONERSH

[www.wonershparish.org](http://www.wonershparish.org)



### Your councillors:

Please telephone any of us if you have a local issue you would like to discuss.

The Parish Office, located at Wonersh Sports Pavilion, is open by appointment - call the Parish Clerk (Lisa Davison) on **892601** or email [clerk@wonershparish.org](mailto:clerk@wonershparish.org).

Email and telephone messages are monitored Monday to Thursday.

Anthony Shutes (Chair)	890831
Max Gibbs	07766 994005
Chris Howard	07879 841000
Ben Knight	07966 269182
Stephen Lavender	07966 533951
Rob Merriman	07711 654699
Kat Parkinson	07773 441164
Kevin Sloan	898472
George Sobek	07354 809130



# Birtley House Nursing Home

*Exceptional care in an idyllic setting - since 1932*

Independent living, respite care, nursing care, long term care,  
and end of life care within a beautiful Surrey Hills landscape

[www.birtleyhouse.co.uk](http://www.birtleyhouse.co.uk) • Birtley Road, Bramley, GU5 0LB • 01483 892 055

**Bullimores**



ESTABLISHED  
1928

## Accountants for Life

- Tax
- Accounts
- Probate
- Inheritance Tax & Executorship

Bullimores LLP licensed to carry out the reserved legal activity of non-contentious probate in England & Wales by the ICAEW



For advice, call us on: **01306 880880** | Email: [partners@bullimores.co.uk](mailto:partners@bullimores.co.uk) | Web: [www.bullimores.co.uk](http://www.bullimores.co.uk)



## ABACUS



**Wonersh  
Pest Control**  
and



## Wonersh Wasp Control

**Pest Control you can count on**  
**Telephone: 01483 299307**

Inclusion of an advertisement in this magazine does not imply that the Church endorses, or takes responsibility for, any product or service provided.