

WONERSH + BLACKHEATH

PARISH CHURCHES

Church Magazine February 2025





LYNE & CO

Building & Renovation Company
Quality building and carpentry work
Bespoke joinery
Painting and Decorating

Capel: 01293 871008

Email: info@lyneandco.co.uk

View examples of our building and joinery work at:

www.lyneandco.co.uk



MJP Plumbing & Heating Ltd

Will do any job from a tap washer to refitting your bathroom.

Boiler repairs and servicing.

Gas safe registered.

Contact Mike on 07768 844276
or mike@mjplumbing.com

**I'm local
No callout fee**

Mac or PC Problem?

- Computer repairs
- Virus removal
- Network & Broadband
- Performance improvement
- Affordable websites
- Purchase advice

All explained in plain English
Drop off or I can come to you

Surrey Hills PC

T: 01306 400121 www.surreyhillspc.co.uk
M: 07771 665 863 david@surreyhillspc.co.uk

SOLVING PEST PROBLEMS OTHERS CAN'T - Since 2008

From Gomshall

ALL PESTS: Rats, mice, squirrels, wasps, woodworm, rabbits, deer fencing, loft insulation clearance



PETER HIGGS

Surrey's highest rated pest control service on



- Ants 2 visits £172 +VAT
- Moles min 2 visits £60 +VAT per visit
- Rodents 3 visits £125 +VAT per visit
- Wasps £99 + Vat Guaranteed for the season

*quote "Wonersh" for these prices

For Homes & Businesses

www.pghbeegone.co.uk

sales@pghbeegone.co.uk

01483 273 478



PGH[®]
PEST PREVENTION

Hivegrove, Kings Court, Burrows Ln, Gomshall, GU5 9QE

Visit our website



Proud members of
Checktrade.com
Where reputation matters

Beegone[®]
LIVE BEE REMOVAL

Inclusion of an advertisement in this magazine does not imply that the Church endorses, or takes responsibility for, any product or service provided.



February 2025

Vicar's letter . . .

Dear Friends,

February tends to be the month when our thoughts turn to the theme of love, driven by our celebration of Valentine's Day on the 14th of the month. Quite where this tradition started is clouded in mystery, but it is reputed to have been recognised as far back as 496AD.

There are various stories about a priest known as Valentine. He may have arranged for soldiers to marry in secret; or another version suggests that St Valentine was killed for trying to help Christians, who were being poorly treated under the rule of Emperor Claudius II, to escape from Roman prisons. However the story began, the day is intended to draw us towards those whom we love, whom we hold dear and to whom we wish to reveal our care and compassion.

That the root of this day comes from the Christian world should not be a surprise: the whole message of Christmas that we have just celebrated, and our journey now towards Easter, is a story of unfolding love. The God who loves us reveals the nature of love to us and seeks a relationship of love with us, and with each other. We read in 1 John 4:8 that "*Whoever does not love does not know God, because God is love.*"

Knowledge of God is a knowledge of what love truly is: a humble, willing, self-sacrificing compassion for someone else. It is a love that we long for, deep down inside - our need to be loved and wanted, to find a home in the arms of someone greater than ourselves, to be found in the arms of God.

If you would like to know more about this love, do come and join our services. Alternatively, explore more via a short Alpha Course, six consecutive weeks of discussion on a Sunday afternoon, starting at 3pm on 23rd February [*see p.4*]. Find true love this year.


With love,
David

February Diary

for St John's Church, Wonersh

Sun 2		5th SUNDAY BEFORE LENT
	10am	All-Age Worship
Tues 4	9.30am	Morning Prayer
Thurs 6	10.30am	Holy Communion (BCP)
Sun 9		4th SUNDAY BEFORE LENT
	8am	Holy Communion (BCP)
	10am	Morning Worship
Tues 11	9.30am	Morning Prayer
Thurs 13	10.30am	Morning Worship
Sun 16		3rd SUNDAY BEFORE LENT
	10am	Holy Communion
Tues 18	9.30am	Morning Prayer
Thurs 20	10.30am	Holy Communion (CW)
Sun 23		2nd SUNDAY BEFORE LENT
	8am	Holy Communion (CW)
	10am	Morning Worship
Tues 25	9.30am	Morning Prayer
Thurs 27	10.30am	Discovery Service
March		
Sun 2		SUNDAY NEXT BEFORE LENT
	10am	All-Age Worship
Tues 4	9.30am	Morning Prayer
Wed 5	7.30pm	Ash Wednesday Service at Blackheath [see p.10]
Thurs 6	10.30am	Holy Communion (BCP)
	
CW = Common Worship (2000) BCP = Book of Common Prayer (Traditional 1662)		

ALL AGE WORSHIP
 1st Sunday of the month at 10.00am



ST JOHN'S
 WONERSH

Midweek Service
 Every Thursday at 10.30am



ST JOHN'S
 WONERSH

Thursday services take place in the church and are followed by coffee and a chat in the Selwyn Room. Transport is provided for those needing it, and many say that this quiet and reflective service is the highlight of their week.

Everyone is welcome!

Connect Groups

We want to encourage each other to grow in faith. Our small groups offer a place where we can learn and develop in an informal environment. Groups of around 10-12 people meet on a regular basis (usually weekly) in local homes to study the Bible, pray, get to know each other and develop deeper friendships. Most groups meet in the evening, but there are some during the day. If you are interested in joining a group or would like to find out more, then please contact **David Peters** (vicar@wonershchurch.org.uk / 07521 090179).

Church Office

The Church Office (in The Vicarage) is open as follows:

Monday	9 am - 2 pm
Tuesday - Thursday	9 am - 1 pm
Friday	9 am - 2 pm

The office number is **01483 890266** (if outside office hours you may leave a message), or email office@wonershchurch.org.uk.

Copy Deadline for March 2025

Please submit articles for the March issue by **Tuesday 4th February**.
 E-mail address for copy is magazine@wonershchurch.org.uk.
 For advertising, please contact John Gosden (JohnGosden@aol.com or tel.502076).

Children and Families Update

What an utter joy it was to welcome so many families to St. John's church this Christmas!



The month began with our All-Age Service (the first Sunday of every month), during which we looked at Jesus coming as the 'Light of the Lord' into the darkness. At Christingle we continued this theme, but this time we focused on how we can be a 'light' too, spreading kindness and love to others. To demonstrate this we dimmed the lights, before lighting the candle on my Christingle orange and sharing it slowly throughout the church, from the front to the back. It was so beautiful watching the light spread from one person to another.

Then, on Christmas Eve, David and I led some 200-odd people through the story of the nativity! We were delighted to enjoy amazing acting from goodness knows how many children dressed in character costumes, and various parents and grandparents had starring roles too. Great fun was had by all!



Now our attention turns to Spring and to the new life that starts to blossom in our gardens. At church we have a long, fertile and empty flowerbed that we would like to turn into little 'Patches' for children in the community to tend with their parents. Our church gardening team will be here every Saturday morning, 10am-12pm, and we would love to share this peaceful, creative space with you.

Please email me for details if you're interested in taking part in our new community project: clare@wonderschurch.org.uk.

With love, Clare

Alpha

It is possible that you have heard of something known as the Alpha Course; St John's has run it a few times in the parish in previous years. We are intending to run the course again, over six consecutive weeks, on a Sunday afternoon, **3 – 4.30pm** starting on **23rd February**.



The course will include a short video talk and then a series of open discussions about the Christian faith, who God is, why Jesus came, how God interacts with us and so on. The course helps unpack ideas and allows time for any thought or comment. It is designed for those both with some faith or none, from whatever background; the most important aspect is to have an open and searching mind.

A warm welcome, tea and cake will be provided. Depending upon numbers, our venue will be determined accordingly; so do please let us know your email or best means of contact to keep you up to date.

Respond via vicar@wonderschurch.org.uk.



ST JOHN'S & ST MARTIN'S
PARISH CHURCHES

Meals Ministry

Are you recently bereaved? Facing serious illness?
Do you have a new baby?
Let us support you with some free home cooked
meals delivered to your door



Please contact: clare@wonershchurch.org.uk
or phone: 01483 890266

www.wonershchurch.org.uk

MUMS, BUMPS
&
BABIES
(UP TO CRAWLING)

MONDAYS 10AM-MIDDAY

THE VICARAGE, ST JOHN'S CHURCH,
THE STREET, WONERSH, GUS OPG

TEA, COFFEE, HOME BAKED CAKES
CHAT AND FRIENDSHIP

FREE PROFESSIONAL POSTNATAL AND
SLEEP SUPPORT AVAILABLE

Contact: clare@wonershchurch.org.uk

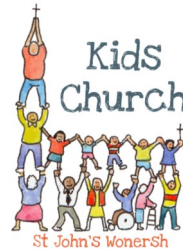
CHATTERBOX
PARENT & TODDLER GROUP

THURSDAY
9.30-11.00AM

LAWNSMEAD HALL, WONERSH

TEA, COFFEE, CAKE
SOFT PLAY, TOYS, STORY AND SONG TIME
FRIENDLY CONVERSATION

www.wonershchurch.org.uk
Contact: clare@wonershchurch.org.uk



Kids
Church

St John's WonerSh

Bible Stories
Crafts & Activities
Games
Songs & Prayer
Friendship

Come & Join us at
The Vicarage,
St John's Church, WonerSh
Sundays, 10-11.15am



Footsteps - Volunteers Needed

Footsteps is a small Guildford charity which for 35 years has been offering a free hot meal and somewhere warm to rest every Sunday afternoon for the disadvantaged and homeless of Guildford. We are based in Beverley Hall, next to Waitrose car park, and are open from 4.30 - 6pm. With the increased pressure on food banks our most recent initiative is to reach out also to households who may be unable to access a food bank. Anyone is welcome to join us on a Sunday afternoon for a free meal; or, depending on their situation, free takeaway food or some tins and jars of food for them to put together a simple meal.

Footsteps is run entirely by volunteers, and each Sunday's team of four or five serves hearty food prepared by an off-site volunteer cook. The number of guests has been growing and we often serve up to 25 people.

We would like more volunteers - to cook, to help in the kitchen or to welcome guests, as many of them enjoy the opportunity to chat without being judged. You can opt to volunteer once every four or six weeks or once a quarter. We would welcome you for a trial visit to see if you'd like to join the team.

Footsteps is funded only by donations to survive. Our food bills, like yours, are rising - the cost of a nourishing meal for 25 guests is not unlike that of six meals for a family of four.

We would be very grateful if you would be interested in joining us, or making a donation. Please contact local volunteer John Wallis on **01483 893459** / johnwallis298@hotmail.co.uk, or email info@footsteps.org.uk - thank you.

North Guildford Food Bank



The Food Bank planned for the run-up to Christmas, which we knew would be a challenging time for many, by running extra sessions. This enabled us to give out well over 300 food parcels during December, helping ease some of our clients' worries about feeding themselves and their families over the Christmas period. Thank you so much for your part in making that possible.

Our requests for February are below:

Washing-up liquid

Conditioner

Tinned tomatoes

Tinned fruit

Instant coffee (not decaf)

In addition, **strong carrier bags** / **bags for life** are always useful.

Donated items can be left in the foyer of St John's church, or in the crate on Rosie Couzens' doorstep (**10 Little Orchard Way, Shalford, GU4 8JY**).

If you would rather make a financial donation, please refer to our website: northguildfordfoodbank.co.uk (if you are a taxpayer, Gift Aid can be claimed by the Food Bank on personal donations).

We love where we live!

So do our registered buyers & tenants who are currently looking for their new home in the Surrey Hills.

If you're thinking of selling or letting your property this year, we'd be delighted to offer you a free market appraisal, without obligation.

Call us today to arrange a valuation appointment

Shalford Sales - 01483 304344 Lettings - 01483 405222



**Chantries
& Pewleys**

chantriesandpewleys.com
shalford@chantriesandpewleys.com
lettings@chantriesandpewleys.com



@chantriesandpewleys

WONERSH MEMORIAL HALL

Your village hall - very reasonable rates.
Children's and family parties, classes, clubs
and now skittles evenings!

Call Hilary Solt 07931 516910
or Louise Healy 01483 898539

R.A. ROBERTSON & SONS

High Street, Bramley.
Tel: Guildford 892207

sales@robbo.co.uk

TV - Domestic appliances - Sales & Service

PROFESSIONAL GARDENER

46 years' experience

Pruning Maintenance (veg.) Hedges
Fruit & Ornamental Trees Planting

Mobile: 07340 525136

RICHARD LEE

Painter & Decorator

Experienced in all aspects of wall coverings,
special effects, interior and exterior decorating.

Over 30 years experience.

Tel: 01483 612055 / 07789685560 / 07717154392

Tai Chi Class for Everyone on Monday evenings at Blackheath Village Hall

With Dr Luke Zhang who is Double
Beijing Tai Chi Champion and retired
medical doctor.

Tel: 07507275522

Email: luke@taichiguildford.co.uk

Website: taichiguildford.co.uk

MASON VOLLER LIMITED

NICEIC registered

Electrical Contractors - Domestic and
Commercial - Installation & Repairs.

Builders Yard, Barton Road, Bramley, GU5 0EB

info@masonvoller.co.uk 01483 572763

Would YOU like to advertise in this space?

If so, ring John Gosden on 01483 502076

or e-mail johngosden@aol.com

Meet Philip and Hilary Vogel

Valentine's Day has great significance for us as it is the day we got engaged in 1958.



I (Hilary) grew up in Bath. I left school at 16 not knowing what I wanted to do in life. After some thought I bought the Farmers Weekly and found a job on a dairy farm. I loved the work and being outside with nature was a bonus. Through my teenage years I did not go to church but had a longing to know God in a real way; it was a searching time and one evening alone at a farm in the Mendip Hills, I prayed a very sincere prayer and asked God into my life. This proved to be a life-changing moment which has never left me.

Philip grew up in a village near Shrewsbury. On leaving school he studied at art college, and then worked in a design studio in London. A work colleague was a man of faith called Drew, who Philip called a 'seven day a week Christian'. Philip had grown up with no church or Sunday school background, but had an open heart and was curious to know about God, so he argued with Drew till he realised that a man with an experience is never at a loss to a man with an argument. It was in Drew's home where Philip asked Jesus into his life. Philip was called up to do National Service, first in Wrexham then near Basingstoke. Arriving at the new camp he was looking for a good church and that was where we met. Hilary thought Philip was "tall, dark and handsome"!

On our first date, Philip told me that when he left the army he would not be going back to his job as he felt God's calling on his life. I was thrilled for him as my heart was also to serve God. We were married in November 1958.



Philip started out doing youth work and evangelism then developed into teaching, preaching, leadership training and mentoring. We were very blessed to have a family, so I was 'keeping the home fires burning' while Philip's work took him far and wide.

We moved to Bramley in 2005. It was through recommendation that we came along to St John's where we found a warm welcome and a sense of belonging. We were soon involved in the life of the church. I now take part in the mid-week service on Thursday mornings at 10.30am, which attracts mainly seniors and is a hub for friendship and caring.

As we look back over 67 years, we are contented and thankful to God for so many blessings which can be summed up in one of our favourite hymns, 'Great is Thy Faithfulness'.



Church Walking Group

In November a good number of the Church walking group enjoyed a walk around Chantryes and Pewley Downs, followed by lunch at the Queen Victoria in Shalford.

The next Church walk will be on **Tuesday 18th March** - further details from Catherine Keech (catherine@keechonline.com).



A Note of Thanks

Once more Charlotte and the carollers from St John's Church brought joy to all who live in Woodyers Close. As one stated: "A beautiful start to Christmas!"

Thank you all very much.

Rosina Henham



Light up a Life

Around 800 people attended Phyllis Tuckwell's Light up a Life service at Guildford Cathedral on Sunday 8th December, gathering together to remember loved ones who are no longer with us. The service included readings and carols, and afterwards the names of those who had had a dedication made in their memory were projected onto the front of the Cathedral. The service was recorded and can be watched at www.pth.org.uk/lual2024. If you would like to, you can make a dedication in memory of a loved one on Phyllis Tuckwell's virtual night sky, at www.pth.org.uk/lual.



GOSDEN HOUSE SCHOOL, BRAMLEY RECRUITING NOW FOR LEARNING ASSISTANTS

WOULD YOU LIKE TO WORK WITH US?

Gosden House is an **outstanding** school for young people with learning and additional needs, from 4-16 years of age. Set in extensive grounds, the environment offers students the opportunity to explore and challenge the potential of learners in every aspect. The curriculum has a strong focus on core learning skills and communication. We aim to develop resilience, creativity and social skills in order to support young people to succeed in the workplace and live rewarding, independent lives.

WHY WORK WITH US AS A LEARNING ASSISTANT?

- Rewarding work with a fantastic group of children and young people
- Term-time only—39 weeks of the year
- Full-time—based on 30 hours per week, 39 weeks of the year. Part-time roles considered
- Salary – S3-S4 dependent on experience. Pro Rata salary, full-time, 30 hours per week £16,902—£18,635
- Great team, beautiful grounds with animals, allotment and extensive outdoor areas.
- Opportunities to get involved in many aspects of school life.

For further information and an application form please visit our website

www.gosdenhouse.org.uk



Blackheath Focus

February 2025



Services at St Martin's

Sunday 2 nd February	Sung Holy Communion	10am
Sunday 9 th February	<i>Services in Wonersh</i>	8am / 10am
Wednesday 12 th February	Morning Prayer	9.30am
Sunday 16 th February	Choral Evensong	6pm
Sunday 23 rd February	'Be Still with God'	6pm
Wednesday 26 th February	Morning Prayer	9.30am
Sunday 2 nd March	Sung Holy Communion	10am
Wednesday 5 th March	Ash Wednesday Service	7.30pm

Ash Wednesday - 5th March, 7.30pm



Ash Wednesday is the first day of Lent and the service will follow a traditional pattern, allowing reflection on the season, marked with the imposition of ashes on the forehead.



Blackheath Care Team

The Blackheath Care Team has a pool of volunteers for residents in Blackheath who need a lift to hospital appointments, or dentist or surgery appointments; the volunteers can also collect prescriptions, etc.

If you need assistance, please contact Penny Kirkwood on **07973 836987** (phone or text), or otherwise Alex Jones on **07810 486521**.

We are happy to help!



See our Facebook page, [The Villagers: Save our Pub](#), for more details.

Study Morning: Bishop Fulton J. Sheen Saturday 15th February, 10.30am - 12.20pm St Augustine's Abbey, Chilworth, GU4 8QR

Members of the public, of all faiths and none, are invited to learn about **Bishop Fulton J. Sheen**, “the Communicator”. Fulton J. Sheen was a pioneer of using media for evangelism, reaching an audience of over 30 million weekly through television and radio.



This episode of Bishop Barron’s *Catholicism: The Pivotal Players* video series explores Sheen’s life, influence and contributions to the Church, taking viewers to significant locations such as Peoria in Illinois, New York, and Washington, D.C., where his legacy was shaped.

Fr John Seddon OSB, resident Benedictine monk at the monastery, will present the video and then lead the discussion about it afterwards. You need no prior knowledge, do not have to be Catholic and don't have to contribute anything to the discussion if you prefer.

Optional holy Roman Catholic Mass is at 9am in the Abbey Church. Then we meet in the Assisi Room at the rear of the monastery for the video and talk.

Refreshments will be freely available; please bring a friend. To attend the Study morning, there is a charge of £10 per person for refreshments and room hire.

ONLY 30 SPACES: ADVANCE BOOKING STRONGLY RECOMMENDED.

For more information, and to book, visit www.chilworthbenedictines.com.

Village News

Wonersh & District Garden Club

At the December meeting, our members were treated to an excellent buffet supper which was provided by the Committee. Many thanks to all those who organised the food and the fun quiz which followed.

Our next meeting will be on **Wednesday 5th February** at 7.30 pm in the Wonersh Memorial Hall. The speaker is Mark Saunders, Head Gardener at Fittleworth House in Sussex since 1997, whose office is in a 19th century potting shed. Not only is Mark a talented gardener, he is also a prizewinning photographer. It should be an interesting talk.



For more information, please contact Hilary Goodridge: tel. **01483 535108** or email hilarygoodridge@ymail.com.



Wonersh United Reformed Church

Minister: Revd Graham Hoslett (tel: 07425 569807)
Facebook - Wonersh United Reformed Church

February 2025 - News

Please see details below of our activities at Wonersh URC.

TCP (Tea, Chat and Prayer) is an opportunity on a Sunday morning to meet together to hear a reading from the Bible, to talk and then pray together for half an hour. Why not come along on **Sunday 9th February** to try it out?

We are also holding our regular **Tea@3** on Thursdays at 3pm; and we have **Film Club** on **Wednesday 5th February**, with the **Taizé Service** on **Wednesday 19th February**. Hope to see you then!
Revd Graham Hoslett

DATES	DETAILS
Sunday, 2 nd February	10.30am: Holy Communion - Revd Graham Hoslett
Wednesday, 5 th February	7pm: Film Club
Sunday, 9 th February	10.30 - 11am: TCP - Tea, Chat and Prayer
Sunday, 16 th February	10.30am: Morning Worship - Andrew Gibb
Wednesday, 19 th February	7pm: Taizé Service - Revd Graham Hoslett
Sunday, 23 rd February	10.30 - 11am: TCP - Tea, Chat and Prayer

Wonersh Environmental Group (WEAG)

Thank you - we now have over 70 volunteers! Last year, WEAG volunteers undertook several volunteer days around Wonersh, including clearing long grass from around recently planted hedging and trees, removing weeds from the pavement along the Common, ragwort and Himalayan balsam removal, and clearing out all the old debris from Barnett Fields and Healy's Wood.

This year we will be scheduling days to plant 1,000 hedging whips and plugs (all funded by grants) at the margin between Barnett Fields and Healy's Wood. Two members of WEAG have undergone training to use chain saws and will lead small teams of volunteers undertaking woodland thinning, coppicing and dead-hedging in Healy's Wood. Do contact clerk@wonershparish.org if you are able to join WEAG - all help much appreciated!

No Such Thing as the Dog Poo Fairy!

The number of dogs and walkers around our villages has increased markedly since the Covid pandemic. Most dog walkers deal with their dogs' excrement in the correct way by picking it up and disposing of it in their bins at home. However, there are now more irresponsible dog owners not picking up after their dogs. This is particularly distasteful in public places, on paths and verges where children are likely to walk and play.



Dog fouling is a major concern to many people, not just because of the mess it causes, but because it can be a health risk. Dogs may deposit roundworm (*toxocara canis*) eggs in their faeces, which become infectious after about three weeks and can remain so for up to two years. Anyone, but particularly children playing near to the ground, can run the risk of picking up and swallowing the eggs. The eggs then hatch in the intestine, burrow through the intestine wall into the blood stream and pass into the body.

Please, please, please - if you are a dog owner pick it up and take it away.

An entry for your March calendar!

Village Barn Dance – Delicious Supper included

The D'Arcy Spice band (darcyspice.co.uk) is coming to Wonersh Memorial Hall on **Saturday 8th March, 7pm for 7.30pm start**. Come and join us for what promises to be another great evening. No previous experience needed - the band will tell you what to do!



Tickets **£18.50** - Family Discounts. Bring your own drinks.

Please email Graham on grahamjhealy@gmail.com or tel. **01483 898539** to book, or for more information.

U3A Wonersh & District

Your local U3A, covering Blackheath, Bramley, Chilworth,
Shalford, Shamley Green and Wonersh



What's on in February 2025 – join us for these activities

- Mon 3 **Pilates:** Lawnsmead Hall, Wonersh
 Tues 4 **Tai Chi Improver/Inter:** Lawnsmead Hall
Big Band Music: Memorial Hall, Wonersh
 Wed 5 **Table Tennis:** Bramley Village Hall
 Thurs 6 **Mah Jong:** Bramley Library Room
Latin: Godalming
Pottery: Farley Green
 Fri 7 **French:** Godalming
 Mon 10 **Pilates:** Lawnsmead Hall, Wonersh
Book Club: Selwyn Room, Parish Church
 Tues 11 **Tai Chi Improver/Inter:** Lawnsmead Hall
 Wed 12 **Table Tennis:** Bramley Village Hall
Pub Lunch: Percy Arms, Chilworth
 Thurs 13 **Line Dancing:** Shalford Upper Hall
Latin: Godalming
 Mon 17 **Pilates:** Lawnsmead Hall, Wonersh

- Tues 18 *(No Tai Chi)*
Short Walk: meet Thursley, Dyehouse Rd
 Recreation Ground car park
 Wed 19 **Table Tennis:** Bramley Village Hall
 Thurs 20 **Latin:** Godalming
Pottery: Farley Green
 Fri 21 **French:** Godalming
 Mon 24 *(No Pilates)*
 Tues 25 **Tai Chi Improver/Inter:** Lawnsmead Hall
Listening to Music: Memorial Hall, Wonersh
 Wed 26 **Table Tennis:** Bramley Village Hall
 Thurs 27 **Latin:** Godalming
 Fri 28 **Art:** Bramley Village Hall

*Join us for some very interesting talks, visits
and activities. Newcomers are welcome.*

*For further details, please phone Cilla or Alex
on 01483 892348, or visit*

<https://u3asites.org.uk/wonersh>

Rising Stars at Holy Trinity Bramley
 Supporting the **Royal College of Music Hardship Fund**
 Saturday 1st February at 7:00 pm

Flutes & Frets

Beth Stone & Daniel Murphy
 Music spanning 600 years from ancient Gregorian chant to Broadway favourites

Tickets £10 (under 18's and students £5)
 Online from Stuart White - bramteymusic2012@gmail.com
 or 01483 892645
 In person (cash only) from Robertsons in Bramley High Street

WONERSH PLAYERS
 PRESENT

**JACK
AND THE
BEANSTALK**

PANTO-TIME!

20-22
 FEBRUARY

WONERSH MEMORIAL HALL
 To book tickets, visit:
ticketsource.co.uk/wonersh-players



Memory Lane



Memory Lane has an interesting discussion arranged for the first meeting in February. This is a follow-on from ‘Celebration of Christmas’ which Dr Susan Tresman presented in Cranleigh Parish Church [see left] for people with dementia and their carers.

On **Monday 3rd February** at **2.15pm**, Dr Tresman will be advising carer guests on help given to people who are responsible for anyone experiencing dementia; also what to expect from doctors. As the Independent Carers Lead for NHS Surrey Heartlands, she informs medical practices and hospitals of the different approach required when carers make and arrive at appointments. This discussion is not only of encouraging help for carers, but also their response will be presented to the NHS Boards to assist them in their outreach to those less fortunate.

On the following Monday (**10th February**), Memory Lane will be taking part in their ‘Walk in the Park’ [see right] at **10.30am** around Knowle Park, Cranleigh; and then back to the Cranleigh Arts Centre for the final meeting of the month at **2.15pm** on **Monday 17th February**.



For further information, please call 01483 274398 or email mamwild@aol.com.



Shere Arts Week

9th - 15th June

St James' Church, Shere, GU5 9JU

Following the success of the 2023 Arts Week at St James' Church in Shere, a similar celebration is planned for this summer. A wonderful programme of events has been finalised, including live music, film, poetry, words and a glorious art exhibition [see below] that runs all week and features the work of local artists. The programme details will be available from March.

This year's sub-theme is 'Light', and everyone is invited to celebrate the interaction of words, art, music and faith. All events are held in St James' Church and are free to attend, with donations much appreciated. The Arts Week Coffee Club will be open every day, and all are warmly welcome to attend any or all of the activities! Any enquiries: artsweek@parishofshere.com.

.....

Art Exhibition - a call for artworks!

A highlight of the Arts Week is the art exhibition which showcases the work of local artists, amateur and professional. All artists are invited to submit their work, in 2D or 3D, based on the theme of Light. There is no fee or commission taken, although a donation to the church is most welcome if an artwork is sold.

A big shout out to our artists! Come and help us celebrate art in all its forms and share the joy of creativity with our community. To express your interest, or for any enquiries, please email artsweek@parishofshere.com by **23rd February**.

Twinkle toes
 Mobile foot care clinic

MEMBER OF


Kirsten Hall MCFHP MAFHP
 07592 853178
 twinkletoesfeet@outlook.com

• All in the comfort of your home •

LAWNSMEAD HALL
 A Victorian building, extensively restored, with well-appointed and comfortable facilities.

Located in the centre of Wonersh, looking out over the cricket green.

To book either the Main Hall or the smaller Turner Room, contact the Parish Administrator on **01483 890266**, or email office@wonershchurch.org.uk

MULLARD
 FUNERALS — GODALMING SINCE 1867

INDEPENDENT FUNERAL DIRECTORS & MEMORIAL MASONS



- 24 Hour professional & personal service
- Pre paid & pre arranged funerals
- Private chapels of rest

01483 860279 • www.mullards.uk
 121-123 High Street, Godalming
 Surrey, GU7 1AG

FM

Feeling lonely? Fancy a tasty lunch and a friendly chat?

Then join the Villages Wednesday Club. We meet at Blunden Court, Bramley every Wednesday 10am-2.30pm

For only £6 you get morning coffee, a freshly prepared lunch, entertainment and afternoon tea

For older people living in Shamley Green, Wonersh, Bramley and the surrounding villages it's a lovely day out and a chance to meet old friends and make new ones!



The VILLAGES WEDNESDAY CLUB
 open to anyone living in Bramley, Wonersh, Blackheath, Shamley Green and surrounding villages



For more information contact the manager Nicola Mendelsohn on 01403 470895 or email manager@fourvillages.co.uk or just pop in any Wednesday for a chat

Get in touch now either for yourself or for a member of your family.

We may be able to help with transport - please ask more details on www.fourvillages.co.uk

FUNDRAISING CONCERT IN AID OF CUT OUT CANCER
 AN ECLECTIC EVENING OF MUSICAL ENTERTAINMENT
 Jazz, Folk, Classical & Gospel

DONATIONS ONLY



GODALMING MINSTER

SATURDAY 1 FEBRUARY 2025, 19h00
 GODALMING MINSTER, Church St, Godalming GU7 1EW
 LIGHT REFRESHMENTS DURING THE INTERVAL
 Contact and registration: richandmarielle@hotmail.com

Discover the Story behind Wintershall's Biblical Plays Saturday 1st March, 2.30 - 3.45pm St Dunstan's RC Church, Woking, GU22 7DT

The Guildford and District Knights of St Columba are hosting this fascinating talk, offering a deeper appreciation of Wintershall's legacy and its powerful portrayal of Christ's teachings.

Wintershall, an estate nestled in the beautiful Surrey Hills near Bramley, is renowned for its large-scale open-air productions of Biblical events, including *The Nativity*, *The Passion of Jesus* and *The Life of Christ*. Stephanie Pena, celebrated for her roles as Mary Magdalene and Angel Gabriel, will delve into the profound journey behind the scenes of these transformative productions. Attendees will gain unique insights into Wintershall's history, mission and dedication to authentic storytelling, as well as the spiritual challenges of portraying Biblical figures.



Tickets **£5**, with proceeds supporting Wintershall's work and the Knights of St Columba's charities. Advance booking is highly recommended at ticketsource.co.uk (search 'Wintershall').



Please visit www.stcatherines.info for more details.



BABY CATS | LET'S GET CREATIVE

Friday 31st January | For 2-4 yrs

Let us stimulate your child's creative mind and join us for an arts and crafts session. Be prepared to get messy!

9.30 - 10.30am | St Cats Prep Gym

There is no charge, but please book your place on tinyurl.com/349c3673.



STORY EXPLORERS STAY AND PLAY

Saturday 8th February | 2 - 3.30pm | For 2 and 3 yrs

Join us for an afternoon of storytelling, crafts, dance and music! Please bring a friend or two to share in the fun.

Refreshments will be provided - don't forget to bring your teddy bear!

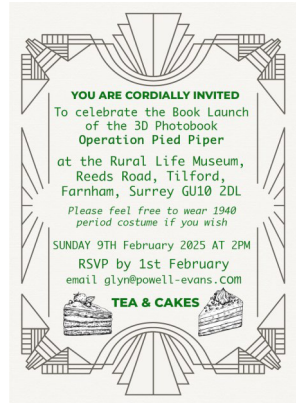
There is no charge, but please book your place by emailing prepadmissions@stcatherines.info or by calling **01483 899665**.

Operation Pied Piper - 3D Photobook Launch Sunday 9th February, 2pm Rural Life Museum, Reeds Rd, Tilford, GU10 2DL

On Friday 1st September 1939, the British government initiated **Operation Pied Piper** with the blunt message: ‘**Evacuate forthwith.**’ More than 1.5 million people from urban ‘target’ areas, of whom 800,000 were children, were evacuated over three days to get them out of the way of the Luftwaffe.

The Photobook tells the story of Imogen, evacuated from Wandsworth where she went to school, to Wonersh. Much of the story is based on fact and local research. The book is in 3D with simple glasses included with the purchase, and has supporting video and sound via a QR code. For more details, please have a look at www.powell-evans.com/operation-pied-piper-book.

Please join us for a 1940s Tea Party at the Rural Life Museum in Tilford to celebrate the Book Launch - email glyn@powell-evans.com or phone 07970 134205 if you would like to attend.



Glimpse over the Garden Wall - Opening the Door to Munstead Wood Wednesdays to Saturdays, 12 noon - 4.30pm Guildford Museum, Quarry Street, GU1 3SX

Come and learn about the National Trust's work at Munstead Wood, the home of garden designer Gertrude Jekyll, her life and work, and the history of the garden.

This small exhibition (open until **Saturday 22nd February**) has been put together by the Munstead Wood Curator, with the wider property team, to explain what remains of the Arts and Crafts house and garden, which was



a creative collaboration between Gertrude Jekyll and her young architect friend, Edwin Lutyens, at the beginning of his career. Learn how the property was saved by the National Trust in 2023; and how they are now exploring the best way to provide this unique property with a long and sustainable future, protecting the delicate fabric of the site whilst allowing access, and also bringing benefit to the local community.

Family Fun Day

Wednesday 19th February,

10am - 12.30pm



Guildford Cathedral, Stag Hill, GU2 7UP

Come and explore 'high and low' in the Cathedral, enjoy a reflective storytelling session about special places and create your own artwork inspired by what you've seen and heard.

Free event but must be booked in advance via the [Box Office](#) – book your arrival slot and you can then stay as long as you like. Children must be accompanied by an adult. Any questions, please email familyengagement@guildford-cathedral.org.



ABBA Concert

Saturday 8th February, 7 - 9.30pm

Emmanuel Church, Guildford, GU2 9SJ

Come and join the Royal Surrey Choir to celebrate our 10th Anniversary at our charity ABBA concert. For **ONE NIGHT ONLY** we will be raising the roof with all your favourite songs from the ABBA back catalogue including 'Voulez Vous', 'Waterloo' and 'Thank you for the Music'.

Tickets are £10 from www.ticketsource.co.uk/rschoir. All proceeds will be donated to the Royal Surrey Hospital Charity in celebration of their 30th Anniversary. Doors open at 6pm and, as well as some amazing music, there will be a bar and a raffle with fabulous prizes.

Quiz for a Cause - Spring Edition

Friday 7th March, 6.30pm

Guildford Cathedral, GU2 7UP



Back by popular demand - a spring edition of the popular Quiz for a Cause! Guildford Cathedral are hosting a pub-style quiz night. Gather your friends/family/ neighbours, enjoy a delicious burger, and test your knowledge against other teams.

On the evening, doors will open at 6.30pm and food will be served as you arrive. The quiz will start at 7.30pm. There will also be desserts available for purchase on the night, plus a bar and a raffle.

Teams of up to 8 people. When booking, please put your team name after your name. Put any dietary requirements in the 'Special Instructions' box – most of the menu options can be adapted to suit any dietary requirements so it is always worth asking. The wonderful team at Seasons will make the meal suitable for you to eat.

Tickets cost **£20** per person - to include dinner and a contribution to the Cathedral - available from the [Box Office](#).

Volunteers Needed! **Are you looking for a rewarding volunteer opportunity?**

The Brigitte Trust (brigitte-trust.org) needs volunteers to become home visitors to local people with life-limiting illnesses such as cancer, organ failure or a neurological condition.

As a volunteer, you will be supporting people to stay connected to their local community, providing companionship and a listening ear during difficult times. No experience necessary - we offer all our volunteers comprehensive training where you'll learn valuable life skills. This is a great opportunity to be part of an established team, meet new people and make a difference in your community.

Please get in touch, we'd love to hear from you - ring **07814 747585** or email volunteer@brigitte-trust.com.

News from Bramley Library



We were delighted that so many of our library members and families came to our 10th anniversary celebration in December. The library was very busy, especially in the Junior Section where two tables of craft activities were set up for the children to enjoy.

For the adults, the Prosecco and mulled wine went down a treat, as did the mince pies and other nibbles and the gifts of chocolate and pens with the Bramley Library logo - AND there was a CAKE! Patrick Leung, Chair of Bramley Parish Council, had the honour of cutting the first slice and took the opportunity to say a few words of thanks to all our volunteers for making it possible for Bramley Library to remain open for the past 10 years.

Have your Say on Surrey's Rights of Way



Surrey County Council is responsible for around 2,164 miles (3,482 km) of public rights of way, in both countryside and urban areas. These are important for enjoying and exploring, for travelling to work or school, and for health and wellbeing. They are part of what makes Surrey a special place to live, work and enjoy.

Every council that is responsible for public rights of way must have a Rights of Way Improvement Plan (ROWIP). This sets out how public rights of way meet the needs of the public, now and in the future.

With over 4000 responses to our initial ROWIP survey, we have now drafted a new ROWIP. We want to give everyone a final opportunity to have their say and shape the new plan which will run for ten years until 2035.

The survey is open until **9th February** - don't miss your chance to have your say today: <https://orlo.uk/23kr0>.

VICAR: Rev'd David Peters 07521 090179 vicar@wonershchurch.org.uk
CHURCH OFFICE 01483 890266 office@wonershchurch.org.uk
 (for all other church contacts)

Village Contact Points

Wonersh & Shamley Green CE Primary School 892345

Headteacher: Mr Tim Cheesman

Police: Emergency 999 or 112 Non-emergency 101

Safer Neighbourhood Team

waverley@surrey.police.uk

Inspector Rob Brian (ID 3048)

Rob.Brian@surrey.police.uk

Sergeant Phil Bayman (ID 40264)

Phil.Bayman@surrey.police.uk

PC Gavin Greenaway (ID 40221)

Gavin.Greenaway@surrey.police.uk

PCSO Felicity Lock (ID 14267)

Felicity.Lock@surrey.police.uk

Waverley Borough Councillor: Michael Goodridge MBE 535108

michael.goodridge@waverley.gov.uk

Lawnsmead Hall: Church Office 890266

Memorial Hall: Hilary Solt 07931 516910

WonCares (Monday to Friday) 894004

Wonersh Connections www.wonershconnections.org

1st Wonersh Scout Group



Group Scout Leader: Robin Beeson 07766 641777

email: 1stwonershgs1@gmail.com

Wonersh Parish Council

BLACKHEATH • SHAMLEY GREEN • WONERSH

www.wonershparish.org



Your councillors:

Please telephone any of us if you have a local issue you would like to discuss.

Anthony Shutes (Chair) 890831

The Parish Office, located at Wonersh Sports Pavilion, is open by appointment - call the Parish Clerk (Lisa Davison) on **892601** or email clerk@wonershparish.org.

Max Gibbs 07766 994005

Email and telephone messages are monitored Monday to Thursday.

Chris Howard 894437

Ben Knight 07966 269182

Stephen Lavender 07966 533951

Rob Merriman 07711 654699

Kevin Sloan 898472

George Sobek 07354 809130

VACANCY [Shamley Green Ward]



Birtley House Nursing Home

Exceptional care in an idyllic setting - since 1932

Independent living, respite care, nursing care, long term care, and end of life care within a beautiful Surrey Hills landscape

www.birtleyhouse.co.uk • Birtley Road, Bramley, GU5 0LB • 01483 892 055

Bullimores



ESTABLISHED
1928

Accountants for Life

- Tax
- Accounts
- Probate
- Inheritance Tax & Executorship



Bullimores LLP licensed to carry out the reserved legal activity of non-contentious probate in England & Wales by the ICAEW

For advice, call us on: 01306 880880 | Email: partners@bullimores.co.uk | Web: www.bullimores.co.uk



ABACUS



Wonersh Pest Control and



Wonersh Wasp Control



Pest Control you can count on
Telephone: 01483 299307

Inclusion of an advertisement in this magazine does not imply that the Church endorses, or takes responsibility for, any product or service provided.