



ST JOHN'S & ST MARTIN'S  
PARISH CHURCHES

## Church Magazine

December 2025 - January 2026

Christmas  
Pull-Out  
Inside!





## Building & Renovation Company

Quality building and carpentry work

Bespoke joinery

Painting and Decorating

Capel: 01293 871008

Email: info@lyneandco.co.uk

View examples of our building and joinery work at:

[www.lyneandco.co.uk](http://www.lyneandco.co.uk)



## MJP Plumbing & Heating Ltd

Will do any job from a tap washer to refitting your bathroom.

Boiler repairs and servicing.

Gas safe registered.

Contact Mike on 07768 844276  
or [mike@mjpplumbing.com](mailto:mike@mjpplumbing.com)



# Szabina

DESIGN & ALTERATIONS

## TAILORING AND ALTERATIONS

- RE-SIZE
- RE-STYLE
- RE-DESIGN







**Womenswear and Menswear Alterations,**  
Shortening, Lengthening, Let out, Take in,  
Zip replacement (coats, trousers, dresses, etc.)  
Prom / Wedding / Bridesmaid Dress Alterations  
Men's Suit and Trousers / Sleeves Alterations

### CURTAINS, BLINDS, HOME DECOR





Made to measure Curtains  
Roman Blinds  
Curtains Alterations  
Cushions cover



## 07960143283

[szabina.farago@gmail.com](mailto:szabina.farago@gmail.com)

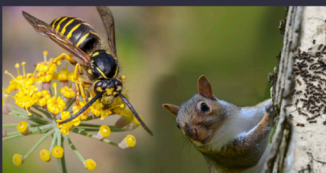


**COLLECT AND DELIVER**  
Whitley Manor Cottage, Bramley, GU5 0LL

## SOLVING PEST PROBLEMS OTHERS CAN'T - Since 2008

*From Gomshall*

ALL PESTS: Rats, mice, squirrels, wasps, woodworm, rabbits, deer fencing, loft insulation clearance



Surrey's highest rated pest control service on



- Ants 2 visits £172 +VAT
- Moles min 2 visits £60 +VAT per visit
- Rodents 3 visits £125 +VAT per visit
- Wasps £99 + Vat Guaranteed for the season

\*quote "Wondersh" for these prices

**For Homes & Businesses**

[www.pghbeegone.co.uk](http://www.pghbeegone.co.uk)

[sales@pghbeegone.co.uk](mailto:sales@pghbeegone.co.uk)

# 01483 273 478



**PGH**  
PEST PREVENTION

Hivegrove, Kings Court, Burrows Ln, Gomshall, GU5 9QE

PETER HIGGS

Visit our website



Proud members of  
**Checkatrade.com**  
Where reputation matters

**Beegone**  
LIVE BEE REMOVAL

Inclusion of an advertisement in this magazine does not imply that the Church endorses, or takes responsibility for, any product or service provided.



## **December 2025 & January 2026**

### **Vicar's letter . . .**

Dear Friends,

Sometimes we find ourselves in the presence of someone quite extraordinary, a dynamic, life-enhancing person who brings energy and life. While I would not immediately think of quoting Albert Einstein, a scientist, it was he that said, "Life is a great tapestry." What a terrific image: a tapestry where each thread represents our experiences, emotions, and relationships, weaving them together to form a whole picture of life.

We may look at the threads in our tapestry and wonder about the colours or the knot used; but when we stand back, we see their place and beauty. We find a fulfilment and joy in our heart and soul which we had not noticed before.

Christmas is part of that great tapestry; an amazing event with a most unusual person being the centre of attention. A baby? Born in unusual circumstances, to a virgin and in a stable? These are not just unusual colours, they are extraordinary.

But when we stand back, we see that this event has changed the course of history, our chronology and calendar, our perspective and world view, our beliefs and hope. In this small baby resides the future of humankind and our personal relationship with God. Perhaps most extraordinary of all is that it was planned and proposed by God, prepared and delivered by God. And even though the end of the child's life was known from the beginning, still this glorious gift was given.

Real joy is not transitory or passing, like the sudden revelation of a gift from within the wrapping paper. The joy that comes from knowing God is a life-changing joy, and that is the perfect colour and perfect knot that is tied at Christmas. Allow the Christ child to become part of your tapestry this year.

Wishing you a very Happy Christmas and wonderful New Year.

With love,  
*David*

# December / January Diary

for St John's Church, Wonersh

## December

Tues 2	9am	Morning Prayer
Thurs 4	10.30am	Holy Communion (BCP)
Sun 7		<b>2<sup>nd</sup> SUNDAY IN ADVENT</b>
	10am	All-Age Service
Tues 9	9am	Morning Prayer
Thurs 11	<b>9.30am</b>	<b>Chatterbox Christmas Special</b>
		<b><u>NB: No 10.30am service in church</u></b>
		<b>(12pm - Seniors' Christmas Dinner in Lawnsmead)</b>
Sun 14		<b>3<sup>rd</sup> SUNDAY IN ADVENT</b>
	8am	Holy Communion (BCP)
	10am	Morning Worship
	<b>4pm</b>	<b>Christingle Service</b>
Tues 16	9am	Morning Prayer
Thurs 18	10.30am	Carols & Communion
Sun 21		<b>4<sup>th</sup> SUNDAY IN ADVENT</b>
	10am	Holy Communion
	<b>6pm</b>	<b>Carols by Candlelight</b>
Wed 24		<b>CHRISTMAS EVE</b>
	<b>4pm</b>	<b>Crib Service</b>
	<b>11pm</b>	<b>Christmas Eve Communion <u>at Blackheath</u></b>
Thurs 25		<b>CHRISTMAS DAY</b>
	<b>9am</b>	<b>Reflective Communion</b>
	<b>10.30am</b>	<b>Christmas Day Family Service</b>
Sun 28		<b>SUNDAY AFTER CHRISTMAS</b>
	10am	Holy Communion

## January 2026

Thurs 1	10.30am	Holy Communion (BCP)
Sun 4		<b>2<sup>nd</sup> SUNDAY AFTER CHRISTMAS</b>
	10am	All-Age Service

## January (cont'd)

Tues 6	9am	Morning Prayer
Thurs 8	10.30am	Morning Worship
Sun 11		<b>1<sup>st</sup> SUNDAY OF EPIPHANY</b>
	8am	Holy Communion (BCP)
	10am	Morning Worship
Tues 13	9am	Morning Prayer
Thurs 15	10.30am	Holy Communion (CW)
Sun 18		<b>2<sup>nd</sup> SUNDAY OF EPIPHANY</b>
	10am	Holy Communion
Tues 20	9am	Morning Prayer
Thurs 22	10.30am	Discovery Service
Sun 25		<b>3<sup>rd</sup> SUNDAY OF EPIPHANY</b>
	8am	Holy Communion (CW)
	10am	Morning Worship
Tues 27	9am	Morning Prayer
Thurs 29	10.30am	Holy Communion (CW)

## February

Sun 1		<b>4<sup>th</sup> SUNDAY OF EPIPHANY</b>
	10am	All-Age Service

.....

CW = Common Worship (2000)      BCP = Book of Common Prayer (Traditional 1662)

## Church Office

The Church Office is open as follows, until **Tuesday 23<sup>rd</sup> December:**

<b>Monday</b>	<b>9 am - 2 pm</b>
<b>Tuesday - Thursday</b>	<b>9 am - 1 pm</b>
<b>Friday</b>	<b>9 am - 2 pm</b>

The office number is **01483 890266** (if outside office hours you may leave a message), or email [office@wonershchurch.org.uk](mailto:office@wonershchurch.org.uk).

The Office will reopen after the break on **Monday 5<sup>th</sup> January 2026.**

To speak to someone urgently during the holidays, please ring **07521 090179.**

# A Joyful December for Families

As we head towards Christmas, we've got a wonderful line-up of festive fun for families, full of sparkle, story and a good dash of joyful chaos!

✦ **Chatterbox Christmas Special: Thursday 11<sup>th</sup> December, 9.30–10.45am, St. John's Church**

Join us in church for our special end-of-term celebration, packed with all the usual games and crafts, plus Christmas refreshments and a sharing of the Christmas story together! Children are invited to come dressed in their favourite Christmas outfit if they'd like.

🕯 **Christingle: Sunday 14<sup>th</sup> December, 4–5pm, St. John's Church**

Join us for this beautiful celebration as we fill the church with the warm glow of candlelight and discover more about the meaning behind Christingle. It's a magical moment for all ages.

🦃 **Crib Service: Christmas Eve, 4-5pm, St. John's Church**

Expect joyful chaos and plenty of laughter as we retell the Christmas story together. Come dressed as your favourite nativity character or borrow one of our costumes and be part of our scratch nativity. Everyone's welcome to join the fun!

After the Christmas celebrations, Kids' Church will resume on **Sunday 4<sup>th</sup> January**: we can't wait to see everyone back for a brand-new term of faith, fun and friendship.

[clare@wonershchurch.org.uk](mailto:clare@wonershchurch.org.uk)

## MUMS, BUMPS, & BABIES

Coffee, cake, and connection

A gentle, friendly space for mums of little ones from bump through to crawling.

A moment to breathe, to be heard, and to be cared for by a team who understand the highs and lows of early motherhood. Baby cuddles always on hand if you need a break!

**TERM TIME MONDAYS 10AM-NOON**

The Vicarage,  
Wonersh Church  
GU5 0PG

[clare@wonershchurch.org.uk](mailto:clare@wonershchurch.org.uk)





## Kids Church

St John's WonerSh

**Bible Stories  
Crafts & Activities  
Games  
Songs & Prayer  
Friendship**

**Come & Join us at  
The Vicarage,  
St John's Church, WonerSh  
Sundays, 10-11.15am**



# Meals ministry

**For when you need a little help**

Are you recently bereaved?  
Facing serious illness?  
Or have you just welcomed a new baby?

We'd love to support you with some free home-cooked meals delivered to your door – a small way to show care and compassion during a challenging time.

Please don't hesitate to get in touch  
✉ [clare@wonershchurch.org.uk](mailto:clare@wonershchurch.org.uk)  
☎ 01483 890266



# Wonersh Community Garden

We are growing vegetables, flowers, and friendship and we'd love you to be part of it.

Join us Saturday mornings 10 am – Noon  
St John's Wonersh, GU5 0PG

Everyone's welcome, no experience needed.

Get in touch with Calum at  
[office@wonershchurch.org.uk](mailto:office@wonershchurch.org.uk)

here  
details



## North Guildford Food Bank

As I write, the Food Bank is preparing for another busy Christmas period. In addition to the usual basics, everyone will receive extra gifts that we are able to give them thanks to all who have donated so generously. However, by the end of December our shelves will be quite empty and need restocking.

Many thanks, as always, for your continued support.

Our requests for December and January are:

**Baked Beans/Tinned Spaghetti**

**Tinned Custard**

**Long-grain Rice**

**Instant Coffee**

**Shampoo/Conditioner**

**Washing-up Liquid**

In addition, we always need **strong carrier bags/bags for life**.

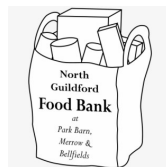


**Wishing you all a Blessed Christmas and a Happy New Year.**



Donated items can be left in the foyer of St John's church, or in the crate on Rosie Couzens' doorstep (**10 Little Orchard Way, Shalford, GU4 8JY**).

If you would rather make a financial donation, please refer to our website: [northguildfordfoodbank.org/donate](http://northguildfordfoodbank.org/donate) which lists the ways you can donate (if you are a taxpayer, Gift Aid can be claimed by the Food Bank on personal donations).



## Meet John Wallis

Sue and I moved to Wonersh in 1993, from neighbouring Bramley. We'd already enjoyed attending this church for six years, inspired in equal measure by our lovely neighbours C&J who zipped off every Sunday to their church in Guildford and by Tom Farrell, the Vicar of the day's hi-vis 'Welcome' sign. For the first time in many moves for me, since I'd come down from Shropshire, Wonersh felt comfortable: a home with our two daughters.



Twenty years ago my Home Counties comfort was challenged by an article in this magazine appealing for volunteers for **Footsteps**, a local soup kitchen operating on Sunday afternoons. It felt shocking that 'Goldenford' had its own homeless population, but after a trial run I was on the team within a week. Over the years we've served regular, transient and some quite memorable guests. I've learnt that give any one of them the time of day, and try to remember their names, and lovely people open up expressing their enjoyment of our hospitality, appreciating respite from life on the streets, and with whom one may have a cracking laugh. It's a delight when a guest recognises me in Guildford during the week and stops me for a chat. The number of guests varies each week but God always oversees the cooks and we never run short of food. Christmas is an exciting time as, with a larger team and longer opening hours, we serve our guests a full Christmas lunch on Christmas Day. Catering for around thirty is quite a task but it is an honour to serve our guests at table rather than having them queue at the servery.

As retirement approached, and I was keen to do something worthwhile, **Guildford YMCA** was recruiting Mentors to encourage struggling young people. I applied, completed the training course then had weekly meetings with a couple of lads; but sadly Covid put paid to that programme. After normality returned the YMCA, having moved premises and purpose, asked me to help young asylum-seeking boys, who were their new residents, with English. In most cases these boys, aged no more than sixteen, had been packed off by their parents in hostile parts for a better life. The YMCA *in loco parentis* provides their home and secures them each a place at college. Many have come on the notorious boats but for me they are here, safe and wanting a purposeful life, and I am thrilled to help them, maths having now been added to my repertoire. Their enthusiasm to learn and politeness are palpable, and it is a joy to see their confidence and characters grow. I have learnt a new lexicon of names from A to Z; and I know that they are all as excited about Christmas as any home-grown youngster half their age.

My Friday and Sunday volunteering adventures are two of the most exciting and rewarding things I have ever done; may they continue all the time the needs are there.



# Together We Make A Village

This Christmas, we're celebrating the people who make our community feel like home.

From first-time buyers to familiar faces, from school fairs to high-street chats — it's the people of Wonersh who make what we do so rewarding.

Thank you for your continued support this year.

Here's to a joyful festive season and to all the new beginnings 2026 will bring.



01483 304 344

[shalford@chantriesandpewleys.com](mailto:shalford@chantriesandpewleys.com)



PAOLOCAFIERO  
PERSONAL TRAINER



**SPECIAL OFFER:**  
10% OFF WHEN YOU PRE-PAY  
FOR 10 SESSIONS

LOCATIONS  
GODALMING, WOKING  
OR YOUR HOME

START YOUR FITNESS JOURNEY  
BOOK NOW!

CONTACTS:  
07500871129  
[P.CAF.FITNESS@GMAIL.COM](mailto:P.CAF.FITNESS@GMAIL.COM)

#### SERVICES

1-TO-1  
COUPLES  
GROUPS (1 TO 4)

#### FOCUS

STRENGTH TRAINING  
STRENGTH IN CYCLING  
WEIGHT LOSS

## MASON VOLLER LIMITED

NICEIC registered

*Electrical Contractors - Domestic and  
Commercial - Installation & Repairs.*

Builders Yard, Barton Road, Bramley, GU5 0EB

[info@masonvoller.co.uk](mailto:info@masonvoller.co.uk) 01483 572763

## RICHARD LEE

Painter & Decorator

Experienced in all aspects of wall coverings,  
special effects, interior and exterior decorating.

Over 30 years experience.

Tel: 01483 612055 / 07789685560 / 07717154392

## R.A. ROBERTSON & SONS

High Street, Bramley.

Tel: Guildford 892207

[sales@robbo.co.uk](mailto:sales@robbo.co.uk)

TV - Domestic appliances - Sales & Service

## WONERSH MEMORIAL HALL

Your village hall - for parties, classes, clubs  
and now skittles evenings!

Online booking: [wonershmemorialhall.com](http://wonershmemorialhall.com)

Call Hilary Solt 07931 516910

or Louise Healy 01483 898539

# Blackheath Focus

## December 2025 / January 2026



### December Services at St Martin's

Monday 1 <sup>st</sup> December	Advent Meditation [see below]	7.30pm
Wednesday 3 <sup>rd</sup> December	Morning Prayer	9am
Sunday 7 <sup>th</sup> December	Candlelit Carol Service [see pullout]	6pm
Wednesday 10 <sup>th</sup> December	Morning Prayer	9am
Sunday 14 <sup>th</sup> December	Services in Wonersh	8am / 10am
Wednesday 17 <sup>th</sup> December	Morning Prayer	9am
Sunday 21 <sup>st</sup> December	Service in Wonersh	10am
Wednesday 24 <sup>th</sup> December	Christmas Eve Communion [see pullout]	11pm
Thursday 25 <sup>th</sup> December	Christmas Communion with Carols [see pullout]	10am
Sunday 28 <sup>th</sup> December	'Be Still with God'	6pm

ST JOHN'S & ST MARTIN'S  
PARISH CHURCHES

## A MEDITATION DURING ADVENT

*Everyone welcome!*  
Monday 1st December 7.30pm  
St Martin's Blackheath

*Followed by refreshments and  
mince pies.*

Without repentance, our hearts will be so full of  
worldly things that there will be "no room at  
the inn" for Christ to be born again.

## COME FIRE OF LIFE

At the turning of the year  
In Taizé style  
6pm  
Sunday 25<sup>th</sup> January 2026  
St Martin's Church  
Blackheath  
Music Silence Reflection

= ⊕ =

St John's Womersley

# Christmas Day

9:00 am - Reflective communion

10:30 am - Jolly celebration!



6:00PM  
SUNDAY  
7th  
DECEMBER

# ST MARTIN'S BLACKHEATH

*Carols by Candlelight*



⊕  
**CHATTERBOX  
CHRISTMAS SPECIAL**

9:30-10:45 am  
11th December  
St John's Womersh



⊕  
Please join us for our  
*Christingle Service*

4:00 - 5:00 pm  
14th December  
St John's Womersh

# Carols & Communion

with refreshments to follow

10:30 am  
Thursday 18th December  
St John's Wonersh



# Crib service

4:00 - 5:00 pm  
Christmas Eve  
St John's Wonersh

Come dressed as your favourite character or borrow one of our costumes, to join in the fun as we tell the nativity story!



# ST JOHN'S WONERSH

*Carols by Candlelight*

6:00PM  
SUNDAY  
21st  
DECEMBER



= O =

# CHRISTMAS COMMUNION

at

St Martin's Blackheath

11:00 pm Christmas Eve  
&  
10:00am Christmas Day

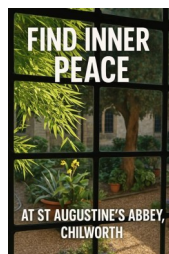


## January Services at St Martin's

Sunday 4 <sup>th</sup> January	Sung Holy Communion	10am
Wednesday 7 <sup>th</sup> January	Morning Prayer	9am
Sunday 11 <sup>th</sup> January	<i>Services in Womersley</i>	8am / 10am
Wednesday 14 <sup>th</sup> January	Morning Prayer	9am
Sunday 18 <sup>th</sup> January	Choral Evensong	6pm
Wednesday 21 <sup>st</sup> January	Morning Prayer	9am
Sunday 25 <sup>th</sup> January	Taizé-style Service [see p.8]	6pm
Wednesday 28 <sup>th</sup> January	Morning Prayer	9am
Sunday 1 <sup>st</sup> February	Sung Holy Communion	10am

## Advent and Christmas at St Augustine's Abbey

Hidden among the wooded hills, St Augustine's Abbey (Sample Oak Lane, Chilworth, GU4 8QR) is a Benedictine monastery where prayer shapes each day and silence welcomes the season of Advent. As candles are lit and Gregorian chant fills the Abbey church, Christmas unfolds in peace, beauty and timeless worship - "where heaven quietly touches earth."



Throughout Advent, the monks gather seven times daily to chant the Divine Office in Latin - ancient psalms and prayers sung for over 1,500 years. Visitors are invited to share this stillness, and experience the enduring wisdom of the Rule of St Benedict: *ora et labora* (pray and work).

In the Abbey workshop, monks handcraft natural beeswax skin creams, lip balms and other gifts - simple, sustainable and made with prayerful care. Sales from the [Abbey Shop](#) help support the monastic life and upkeep of the historic Abbey.

All are warmly welcome to share the peace, prayer and beauty of Advent and Christmas at St Augustine's Abbey.

The highlight of the season for many visitors is the **Advent Carol Service** (at **3.30pm** on **Sunday 14<sup>th</sup> December**), when the Abbey church is filled with the sound of Gregorian Chant and traditional carols sung in Latin and English. The candlelit service evokes the mystery and hope of Advent, followed by a rare glimpse of the enclosed monastery cloister with warm refreshments and a Monastic Produce stall.

See [www.chilworthbenedictines.com](http://www.chilworthbenedictines.com) for more details of this and other Advent and Christmas services at the Abbey.

# **Village News**

## **Wonersh History Society Saturday 24<sup>th</sup> January, 2.30pm Wonersh Memorial Hall**



Many people admire the picturesque **St Martha's Church**, at the top of St Martha's Hill, but how many know its history? The only church in Surrey on the Pilgrim's Way, it has Norman origins; but that structure fell into severe disrepair by the 18<sup>th</sup> century. Between 1848 and 1850, it was rebuilt to designs by Guildford-born architect Henry Woodyer. Much more will be revealed by Simon Harrold when he presents the history of the church to Wonersh History Society.

Non-members are welcome for a fee of £3. To find out more about the Society, including how to become a member, go to [www.wonershhistory.co.uk](http://www.wonershhistory.co.uk).

---

## **Wonersh Cricket Club**



The close season continues for cricket, although that does not mean there is no cricket!

Wonersh held its End-of-Season Awards dinner at the Pavilion recently, celebrating 2<sup>nd</sup> place and promotion for the 1<sup>st</sup> XI team, a win in the League Cup over Headley Old Freemans and finalists in the Surrey Village Midweek Cup. Our leading run-scorer was Rupert Miller, scoring 4 separate centuries, and our leading wicket-taker was Josh Hill. It's been a great season for the Club. And, of course, we are all looking forward to the Ashes in Australia.

Off the field, we would like to remind local residents that the Pavilion is available for hire for meetings, (low-key) parties and the like. Please get in touch via our website - [www.wonershcc.co.uk](http://www.wonershcc.co.uk) - if you'd like to speak to someone about it.

We also issue a monthly(-ish) newsletter - if anyone would like to hear about what is going on at the Club, please email [secretary@wonershcc.co.uk](mailto:secretary@wonershcc.co.uk) to get added to the distribution list.

---

## **Football on Wonersh Common**

The Parish Council, together with Wonersh Cricket Club, are keen to establish junior football team(s) on the common during the winter months. In order to progress this, we are looking for a 'football champion' to take this forward with support from our two organisations.



If you are at all interested in discussing this, then please get in touch with the Parish Clerk, Lisa Davison, via email: [clerk@wonershparish.org](mailto:clerk@wonershparish.org).

# U3A Wonersh & District

Your local U3A, covering Blackheath, Bramley, Chilworth,  
Shalford, Shamley Green and Wonersh



## What's on in December 2025 – join us for these activities

Mon 1 **Pilates:** Lawnsmead Hall, Wonersh  
Tues 2 **Tai Chi** (2 groups): Lawnsmead Hall  
**Big Band Music:** Shalford Club Room  
Wed 3 **Table Tennis:** Bramley Village Hall  
Thurs 4 **Mah Jong:** Bramley Library Room  
**Latin:** Godalming  
**Pottery:** Farley Green  
Fri 5 **French:** Godalming  
Mon 8 **Pilates:** Lawnsmead Hall, Wonersh  
**Book Club:** Selwyn Room, Parish Church  
Tues 9 **Tai Chi** (2 groups): Lawnsmead Hall  
Wed 10 **Table Tennis:** Bramley Village Hall  
Thurs 11 **Line Dancing:** Shalford Upper Hall  
**Short Walk:** meet Blackheath car park  
**Latin:** Godalming

Mon 15 **Pilates:** Lawnsmead Hall, Wonersh  
**Play Reading:** Selwyn Room, Parish Church  
Tues 16 **Tai Chi** (2 groups): Lawnsmead Hall  
Wed 17 **Table Tennis:** Bramley Village Hall  
**Xmas Pub Lunch:** Percy Arms, Chilworth  
Thurs 18 **Latin:** Godalming  
**Pottery:** Farley Green  
Mon 22 - Fri 26 **CHRISTMAS BREAK**  
Mon 29 **Pilates:** Lawnsmead Hall, Wonersh  
Wed 31 **Table Tennis:** Bramley Village Hall

*Join us for some very interesting talks, visits  
and activities. Newcomers are welcome.*

*For further details, please phone Jacqui on  
07814 379294 or visit*

<https://wonersh.u3asite.uk>

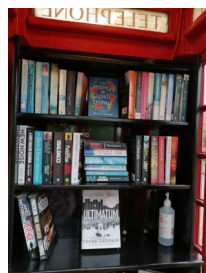
## ‘Book Exchange Champion’ Wanted Wonersh Village Centre Phone Box Adoption

The Parish Council has acquired the phone box outside the village shop, following BT’s decision to close the phone line. BT did agree to paint it first!

After discussion with Wonersh Players, who have already adopted the Blackheath Lane phone box (also owned by the Parish Council), it was identified that another book exchange at the other end of the village could be equally successful. The Parish Council is arranging to have the box fitted out with bookshelves, kindly funded by our village caring scheme, WonCares. When ready, we will advertise the start of the new book exchange.

We now seek a resident volunteer ‘book exchange champion’. The role is to check and tidy the book exchange as required - it could be every one to two weeks, depending on use. If a number of residents are available, then the option of a monthly rota could be considered.

Please contact [anthony.shutes@wonershparish.org](mailto:anthony.shutes@wonershparish.org) if you have time to help.



**Twinkle toes**  
Mobile  
foot care clinic

MEMBER OF  
BPA  
BRITISH PODIATRIC ASSOCIATION

**Kirsten Hall** MCFHP MAFHP  
**07592 853178**  
**twinkletoesfeet@outlook.com**

• All in the comfort of your home •

**IroningFairy**  
SAVE TIME - ENJOY LIFE

Laundry  
Dry Cleaning  
Ironing  
Bulky Items

Fresh, Fast Laundry Delivered.  
Free Collection & Delivery  
Fast Turnaround

01483 428044 | www.ironingfairy.net

**MULLARD**  
FUNERALS — GODALMING SINCE 1897

INDEPENDENT FUNERAL DIRECTORS  
& MEMORIAL MASONS

- 24 Hour professional & personal service
- Pre paid & pre arranged funerals
- Private chapels of rest

01483 860279 • www.mullards.uk  
121-123 High Street, Godalming  
Surrey, GU7 1AG

**FM**

**S Seymours**

**TOP 6 TIPS TO SELL YOUR HOME**  
in Wonersh & Blackheath

- Strong first impressions**  
A tidy front garden & driveway goes a long way.
- Neutral tones. Natural light**  
Makes rooms appear more bright, spacious and inviting.
- Uncluttered rooms**  
Makes it easier for buyers to imagine their own plans.
- Fresh Flowers**  
Sets the tone for a well cared for home and adds energy.
- Subtle touches**  
With a welcoming scent. It can create a positive emotional response.
- Summer fair footfall**  
Take advantage of the increased footfall with a 'For Sale' board.

**SPEAK TO US FOR TAILORED ADVICE ON SELLING YOUR HOME**

01483 576833 | sales@seymours-guildford.co.uk | 217 High Street, Guildford, GU1 3BJ

## Invitation to anyone who enjoys singing at Christmas!

Would you like to join the choir for Carols by Candlelight at St John's?  
(Sunday 21<sup>st</sup> December at 6pm)

Rehearsals in St John's: Saturdays 6<sup>th</sup> / 13<sup>th</sup> / 20<sup>th</sup> December, 9.15-10.30am  
and Friday 12<sup>th</sup> December, 6-7pm

Come to as many rehearsals as you can!

Please contact Ann: [ajberesford53@gmail.com](mailto:ajberesford53@gmail.com)

.....

Would you like to come carol singing around Wonersh? (Dates TBC)

Please contact Charlotte via [office@wonershchurch.org.uk](mailto:office@wonershchurch.org.uk)

*Rural Roars Presents*  
**WONERSH VILLAGE COMEDY NIGHT**  
*Christmas Special*



**ROBIN INCE**  
Headliner

£22

[Ticketsource.com/rural-roars](http://Ticketsource.com/rural-roars)  
7.45pm  
Wed 10th  
December

Wonersh  
Memorial  
Hall



Yazz Fetto



Ava Beaux



Steve McLean



**Snow White**  
Performed by the  
Wonersh Players

February 2026

## An entry for your March calendar! Village Barn Dance – Delicious Supper included

The Stockbrokersbelt Band is coming back to Wonersh Memorial Hall on **Saturday 7<sup>th</sup> March 2026, 7pm for 7.30pm start**. Come and join us for what promises to be another great evening. No previous experience needed - the band will tell you what to do!

Tickets **£20** each. Bring your own drinks.

Please email Graham on [grahamjhealy@gmail.com](mailto:grahamjhealy@gmail.com) or tel. **01483 898539** to book, or for more information.





## Memory Lane News

In November, Memory Lane experienced something quite different when Jez Smith introduced a *Sound-Bath Meditation Session*, so enabling carers to experience complete relaxation. In contrast, leaders of the monthly Memory Lane *Walk in the Park* were met by HM Lord Lieutenant of Surrey on his official visit to Knowle Park. He was most interested to know how beneficial it is for walkers, and to learn more about the Memory Lane meetings in the Arts Centre. His visit can be viewed on [Instagram](#) (search 'knowleparktrust').



This month has a seasonal start on **Monday 1<sup>st</sup> December** with a return visit by the Wintershall Singers, always welcomed by guests and visitors. Their performance will include a sing-a-long, and concludes with all enjoying tea and cakes together. **Monday 8<sup>th</sup> December** is the regular Walk in the Park. Our last meeting for 2025 will be in the Arts Centre on **Monday 15<sup>th</sup> December** with our final Christmas festivities.

Back to normal in 2026 as Memory Lane meets at 2.15pm on **Monday 5<sup>th</sup> January**, and again on **Monday 19<sup>th</sup> January**, in the Cranleigh Arts Centre. The *Walk in the Park* in January will be as normal at 10.30am on **Monday 12<sup>th</sup> January** around Cranleigh's Knowle Park.

February has something different again when Zoe Susijn from Cranleigh Leisure Centre will set up *Motoview* for those experiencing dementia, enabling them to enjoy both physical and mental exercise in a fun situation.

*For further details on Memory Lane activities, please contact Memory Lane:*

**01483 274398** or email [mamwild@aol.com](mailto:mamwild@aol.com).

### The Listening Lounge

1.30-3.30pm, The Beacon Centre, Guildford, GU2 7WW



**Phyllis Tuckwell**  
Hospice Care  
01483 274398

- Music and Memories  
Monday 8<sup>th</sup> September
- How to DIY  
Monday 13<sup>th</sup> October
- Coping Strategies  
Monday 10<sup>th</sup> November
- Tech Support  
Monday 8<sup>th</sup> December
- Cook it, Batch it,  
Freeze it, Love it  
Monday 12<sup>th</sup> January
- Nurturing Nature and  
Moving Forward  
Monday 9<sup>th</sup> February

Find solace in the company of others who truly understand

The Listening Lounge is a compassionate and non-judgemental environment where people can share experiences, memories and challenges related to their loss.

These informal sessions are open to anyone who has been bereaved from an advanced or terminal illness, no matter how recently or long ago their loved one died. Talking to others who have also experienced bereavement can help you feel that you're not alone.

The last hour of each session will be dedicated to a specific topic, on a rolling programme.

Spaces are limited to 12 people per session, so if you would like to attend, please call 01252 729440 or email [pafg@pth.org.uk](mailto:pafg@pth.org.uk) to book.

Phyllis Tuckwell, Waverley Lane, Farnham, Surrey GU10 3BB  
Phyllis Tuckwell Memorial Hospice Ltd. Registered Number: 1003020. Registered Charity Number: 264001

## Christmas Carol Service

**Thursday 18<sup>th</sup> December, 11am**  
**Guildford Cathedral, GU2 7UP**

Everyone is welcome to **Age UK's** annual Carol Service. There will be performances by the Guildford Cathedral Singers, Rock Choir, and Tormead Prep School Choir. The service will include traditional carols, songs and readings. Refreshments and mince pies will be available from 10.30am.

Entry is free for all. No booking is required, but if a wheelchair space is needed don't hesitate to get in touch with Age UK Surrey - please email [fundraising@ageuksurrey.org.uk](mailto:fundraising@ageuksurrey.org.uk) or call **01483 503414**.



# News from our Village School

[wsg.surrey.sch.uk](http://wsg.surrey.sch.uk) | [@MediaWsg](https://www.instagram.com/MediaWsg)

**WSG** We are delighted to join with Surrey Wildlife Trust and their Wilder Schools Project to enrich our curriculum with outdoor learning. The programme goals are to empower the children to take action for nature and improve their wellbeing, help teachers to link outdoor activities to various subjects and improve the school grounds for both wildlife and children. Our project started with the opening of our wonderful new Forest Lodge.

If you would like to help fund projects like this, to provide the very best opportunities and resources for our school community, please visit the WSG PTA fundraising page: [justgiving.com/page/wsgpta25-26](https://justgiving.com/page/wsgpta25-26).



Please visit [www.stcatherines.info](http://www.stcatherines.info) for more details.

Autumn Term ends Thursday 11<sup>th</sup> December - Spring Term starts Wednesday 7<sup>th</sup> January



## **BABY CATS | FESTIVE EXTRAVAGANZA**

**Friday 5<sup>th</sup> December | For 0-4 yrs**

Celebrate the festive season with joyful activities for your little one.

9.30-10.30am | St Cats Prep Gym

There is no charge but please book your place on [tinyurl.com/ytcrvwkn](https://tinyurl.com/ytcrvwkn).

.....



## **ORGAN RECITAL - CATHERINE OLIVER**

**Tuesday 13<sup>th</sup> January 2026 at 4.30pm**

Prep School Hall - no need to pre-book tickets.



## **INFORMAL CONCERT**

**Tuesday 27<sup>th</sup> January at 7pm**

Lower Atrium - no need to pre-book tickets.



*Photo credit: Jan Cooper / Martin Day*

## Lawnsmead Cottages, Wonersh

The 1871 Census reveals that one resident of Wonersh Village was named Edwin Ellis, described in the Census as a 'Master Tanner' employing 72 men and 14 boys. A number of those employees lived in Wonersh, and the Census lists several 'tanners' and 'skinners' in the village. Ellis was born in Guildford in 1834, and his factory was called Summersbury or Gosden Tannery, located near Bramley. In the 1881 Census, Ellis was listed at Summersbury Hall, just off Chinthurst Lane, between Wonersh and Shalford. At that time, he was described as a Farmer of 280 acres employing 30 people; a Tanner employing 94 men and boys; and a Felt Manufacturer employing 57.

Edwin Ellis purchased land in Wonersh on which to build cottages for his employees. He commissioned Henry Peak (Guildford's first Borough Architect and Surveyor, who also maintained a private practice) to design a housing complex comprising 23 artisan cottages. The cottages were completed in 1872 and named Lawnsmead, but were also known locally as The Buildings.

As built, the houses were rather basic, with no running water or toilets. There was one standpipe for water, and night soil was lodged in a small recess for later collection. The coming of mains water, and an outbreak of diphtheria in Lawnsmead in 1913, led to the cottages being connected to the main sewer and being provided with an improved water supply.

Also incorporated into the design was a single-storey Reading Room (*pictured right*), which clearly proclaims the year of building - 1872 - and a large E (for Ellis). In common with other employers, Ellis was keen to provide a place where employees could access newspapers and magazines as a means of education and self-improvement. This room was also used as a schoolroom for infants, until Lawnsmead School was built by the Church of England in 1890. Even after Lawnsmead School opened, and as late as 1910, the Reading Room was used for the teaching of Cooking and Housewifery.



Lawnsmead School closed in 1924 as pupil numbers had dropped to an unsustainably low level, but the former school building remains in use as a church hall to this day.

*Wonersh History Society*

### Copy Deadline for February 2026

Please submit articles for the February issue by **Tuesday 6<sup>th</sup> January**.

E-mail address for copy is [magazine@wonershchurch.org.uk](mailto:magazine@wonershchurch.org.uk).

For advertising, please contact John Gosden ([JohnGosden@aol.com](mailto:JohnGosden@aol.com) or tel.502076).

<b>VICAR: Rev'd David Peters</b>	<b>07521 090179</b>	<a href="mailto:vicar@wonershchurch.org.uk">vicar@wonershchurch.org.uk</a>
<b>CHURCH OFFICE</b>	<b>01483 890266</b>	<a href="mailto:office@wonershchurch.org.uk">office@wonershchurch.org.uk</a>
<b>(for all other church contacts)</b>		

## Village Contact Points

**Wonersh & Shamley Green CE Primary School**

**892345**

Headteacher: Mr Tim Cheesman

**Police:** Emergency **999** or **112** Non-emergency **101**

Safer Neighbourhood Team

[waverley@surrey.police.uk](mailto:waverley@surrey.police.uk)

Inspector Rob Brian (ID 3048)

[Rob.Brian@surrey.police.uk](mailto:Rob.Brian@surrey.police.uk)

Sergeant Phil Bayman (ID 40264)

[Phil.Bayman@surrey.police.uk](mailto:Phil.Bayman@surrey.police.uk)

PC Gavin Greenaway (ID 40221)

[Gavin.Greenaway@surrey.police.uk](mailto:Gavin.Greenaway@surrey.police.uk)

PC Billy Dann

[Billy.Dann2@surrey.police.uk](mailto:Billy.Dann2@surrey.police.uk)

**Waverley Borough Councillor:** Michael Goodridge MBE

**535108**

[michael.goodridge@waverley.gov.uk](mailto:michael.goodridge@waverley.gov.uk)

**Lawnsmead Hall:** Church Office

**890266**

**Memorial Hall:** Hilary Solt

**07931 516910**

**WonCares** (Monday to Friday)

**894004**

**Wonersh Connections**

[www.wonershconnections.org](http://www.wonershconnections.org)

### 1st Wonersh Scout Group



**Group Scout Leader:** Robin Beeson **07766 641777**

email: [1stwonershgsl@gmail.com](mailto:1stwonershgsl@gmail.com)

## Wonersh Parish Council

BLACKHEATH • SHAMLEY GREEN • WONERSH

[www.wonershparish.org](http://www.wonershparish.org)



### Your councillors:

Please telephone any of us if you have a local issue you would like to discuss.

The Parish Office, located at Wonersh Sports Pavilion, is open by appointment - call the Parish Clerk (Lisa Davison) on **892601** or email [clerk@wonershparish.org](mailto:clerk@wonershparish.org).

Email and telephone messages are monitored Monday to Thursday.

Anthony Shutes (Chair)	890831
Max Gibbs	07766 994005
Chris Howard	07879 841000
Ben Knight	07966 269182
Stephen Lavender	07966 533951
Rob Merriman	07711 654699
Kat Parkinson	07773 441164
Kevin Sloan	898472
George Sobek	07354 809130



# Birtley House Nursing Home

*Exceptional care in an idyllic setting - since 1932*

Independent living, respite care, nursing care, long term care,  
and end of life care within a beautiful Surrey Hills landscape

[www.birtleyhouse.co.uk](http://www.birtleyhouse.co.uk) • Birtley Road, Bramley, GU5 0LB • 01483 892 055

**Bullimores**



ESTABLISHED  
1928

## Accountants for Life

- Tax
- Accounts
- Probate
- Inheritance Tax & Executorship

Bullimores LLP licensed to carry out the reserved legal activity of non-contentious probate in England & Wales by the ICAEW



For advice, call us on: 01306 880880 | Email: [partners@bullimores.co.uk](mailto:partners@bullimores.co.uk) | Web: [www.bullimores.co.uk](http://www.bullimores.co.uk)



## ABACUS



**Wonersh  
Pest Control  
and**



## Wonersh Wasp Control



**Pest Control you can count on**  
**Telephone: 01483 299307**

Inclusion of an advertisement in this magazine does not imply that the Church endorses, or takes responsibility for, any product or service provided.